

G/P  
T/C

GP  
NPF

G/P  
T/C

GREAT PLAINS THEATRE COMMONS NEW PLAY FESTIVAL  
MAY 24 - 30, 2026





# TABLE OF CONTENTS

1-4	WELCOME & GPTC INFO
5-10	FESTIVAL INFO
11-18	SCHEDULE OF EVENTS
19-24	EVENING EVENTS
25-30	PLAYWRIGHTS
31-44	GUEST ARTISTS
45-46	PANELISTS
47-50	DESIGN WING
51-57	PLAYLAB DIRECTORS
58-62	BOARD & STAFF
63-71	THANKS

# WELCOME

Dear GPTC Friends,

When we experience intense, societal change, as so many of us are now, we often turn to love, kindness, and shared stories to help us move forward.

That's why we're here this week, gathering together in the Heartland. We're holding space to share stories with each other and making sure that compassion continues to shape the world in which we live.

The entire endeavor of the New Play Festival and the GPTC has been, and continues to be, built with hard work, laughter, tears and generosity. And there are always many people to thank.

We are ever grateful to Metropolitan Community College, who has given us the gift of an incredible home for the Festival for so many years. There is the hard work, deep care, and perseverance of the staff and board of the GPTC. There are our donors, who have made it possible for us to create something that is as groundbreaking as it is life-giving - to create soulful arts programming and to provide it all for free, year-round, while paying all of our artists for their work. And, finally, to the artists who continue to give deeply of their dreams, their talent, and their energy to make new stories every day.

At a moment when the powers running our country strive to eliminate so much that is beautiful and diverse in our society, it's wonderful to feel the strength and goodwill that is represented here this week.

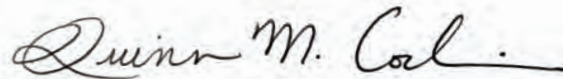
For over 20 years, we have welcomed people from across the country to gather each spring and share stories that explore the deepest aspects of our humanity. That spirit of generosity has always made the New Play Festival a week of vibrant life and we hope that will be true for you this year.

Thank you for being a part of our community. Thank you for helping to bring diverse new stories into the world.

Warmly,



Kevin Lawler | GPTC Artistic Director



Quinn Metal Corbin | GPTC Managing Director

## THE GPTC NEW PLAY FESTIVAL SERVES AS AN AVENUE TO:

- *Introduce new theatrical work into the American theatre scene*
- *Premiere the works of new and emerging playwrights*
- *Explore and strengthen the connection between the community and the arts*
- *Provide avenues for works produced beyond the Festival*
- *Connect local and national playwrights, actors, directors, dramaturgs, designers and technical theatre personnel*

# CULTURAL EQUITY

2

While GPTC was founded on the principle of sharing new and diverse stories, we began our work as an independent arts nonprofit with four white staff members (one nonbinary). We recognized the critical importance of diversity as a core value expressed in our mission and committed to address it. Since 2020, we have achieved over 50% global majority representation on our Board of Directors and have increased diversity among our staff. We intend to continue this trajectory until a standard of equity is achieved.

## ACKNOWLEDGEMENTS & AFFIRMATIONS

- In the United States, there are systems of power that grant privilege and access unequally to a degree that leads to consistent inequity and injustice, and that must be continuously addressed and changed.
- Cultural equity is critical to the long-term viability of the arts sector.
- We must all hold ourselves accountable, because acknowledging and challenging our inequities and working in partnership is how we will make change happen.
- Everyone deserves equal access to a full, vibrant creative life, which is essential to a healthy and democratic society.
- The prominent presence of diverse artists helps to challenge inequities and encourages alternative models.

**ACTION** To provide informed, authentic leadership for cultural equity, we vow to work towards the following goals...

- Maintain 50% or more global majority representation on the GPTC Board of Directors.
- Increase staff diversity until a standard of equity is achieved.
- Continue to work with global majority and systemically excluded artists and community members as a reflection of our foundational commitment to diversity and equity.
- Pursue cultural consciousness throughout our organization through substantive learning and formal, transparent policies.
- Acknowledge and dismantle any inequities within our policies, systems, programs, and services, and assess organizational progress annually.

**FIELD PROGRESS** To pursue needed systemic change related to equity, we vow to...

- Advocate for pro-equity policies and practices for all of our constituencies and audiences.
- Improve the cultural leadership pipeline by creating and supporting programs and policies that foster leadership that reflects the full breadth of American society.
- Advocate for public and private-sector policy that promotes cultural equity.

*THE MISSION OF THE GREAT PLAINS THEATRE COMMONS IS TO STRENGTHEN COMMUNITY BY SUPPORTING THE CREATION AND SHARING OF DIVERSE NEW STORIES.*

GPTC's Community Programs are how we inspire and support local emerging artists and community members to share their diverse stories.

GPTC has offered community arts programming from our home base at Yates Illuminates in the heart of the Gifford Park neighborhood since 2022. We share this space with other community service organizations that prioritize immigrant and refugee populations. As the only arts organization at Yates, we are uniquely positioned to offer everyone in our community an artistic home at any point in their journey. We have developed professional development programming for emerging and established artists as well as culturally responsive workshops and story circles that flexibly engage participants wherever they may meet us. More than 70% of the individuals served by our community programs in 2025 were representative of the global majority.

**STORY CIRCLES AND WORKSHOPS** - In collaboration with community partners, GPTC encourages everyone (especially individuals who may not identify as artists) to tell their stories. Workshops take many forms and explore all facets of theatre arts.

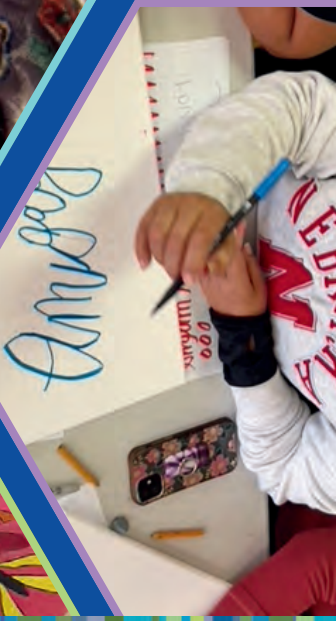
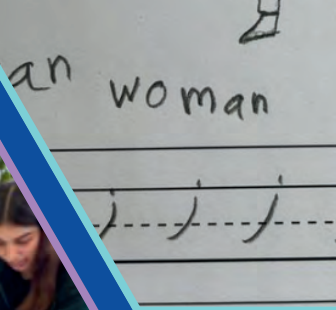
**STORIES OF O** - We invite our community to gather in-person to share sustenance and great stories on the last Sunday evening of each month at Yates Illuminates. These regular, informal gatherings build community connections, create opportunities for dialogue, and promote shared understanding. This year, we added singer/songwriters to the evening, which expanded the ways in which stories are shared.

**COMMONERS** - This is a two-year residency for Omaha and Omaha-adjacent playwrights to grow the support, community, and connection they need to launch their stories into the world.

**PLAY BY MAY** - This program supports individuals who are committing to writing a full-length play for the first time. Writers commit to bi-weekly meetings over a three-month period.

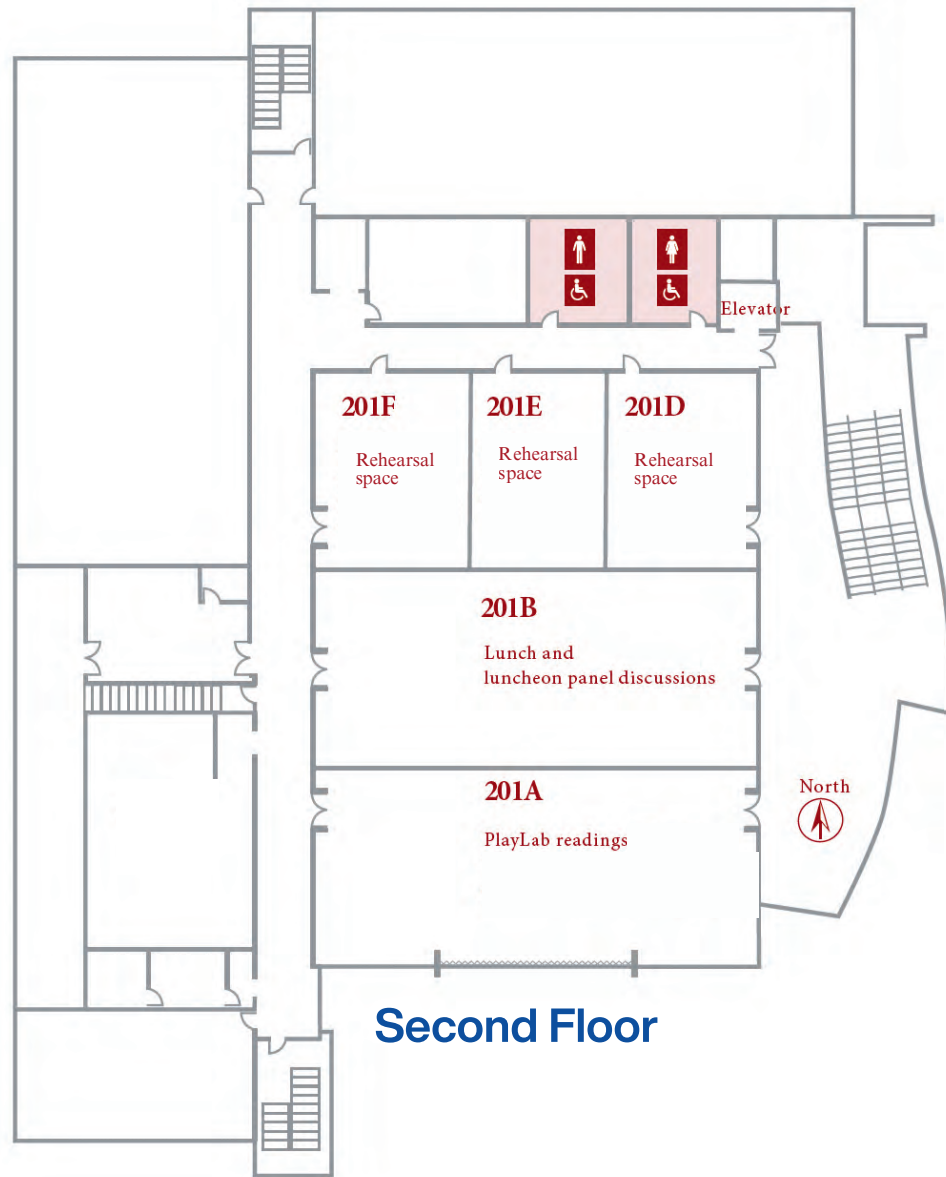
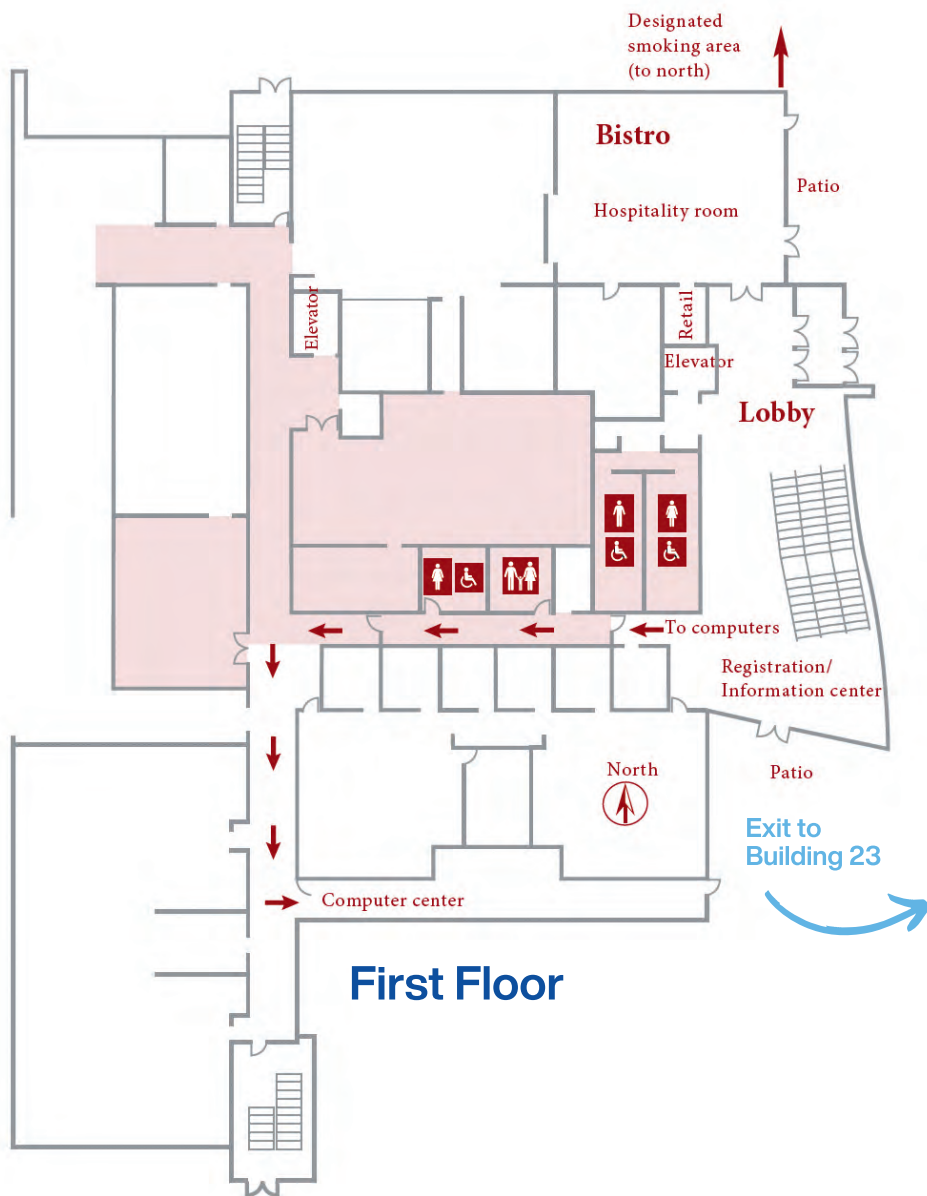
**SILENT WRITE** - The second Tuesday of the month invites area writers to share space in a productive, creatively conducive environment.

**YOUNG DRAMATISTS** - Working to support and develop high school playwrights with mentoring, workshops, meetings with professionals, and guided access to the New Play Festival.



# CONFERENCE CENTER MAPS

## Swanson Conference Center Building 22



# CONFERENCE CENTER MAPS

## CASC Building 23



First Floor

Exit to Building 22

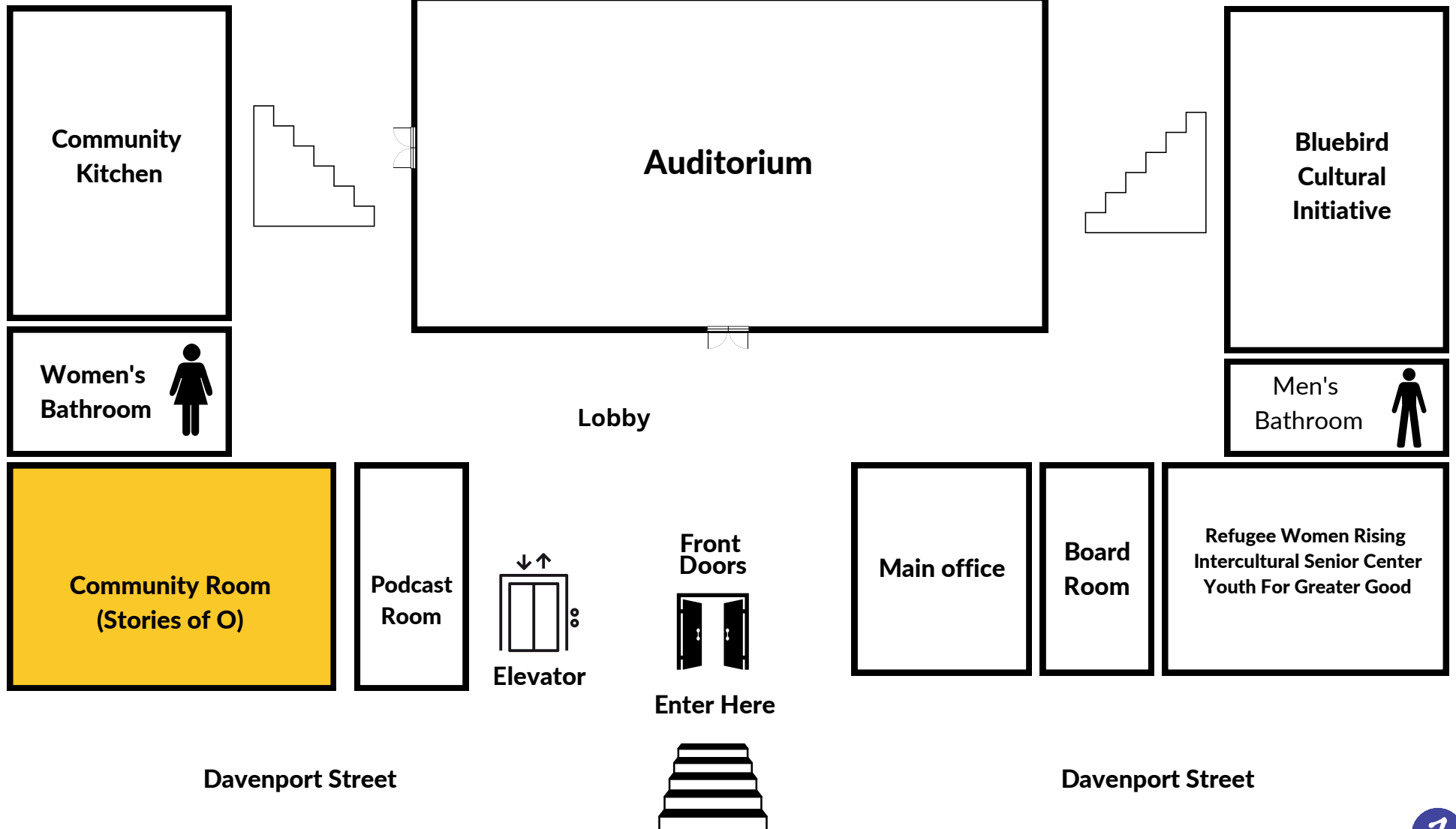


Second Floor



# YATES ILLUMINATES

3260 Davenport St



Great Plains Theatre Commons

Bluebird Cultural Initiative

Men's Bathroom

Community Kitchen

Women's Bathroom

Auditorium

Lobby

Community Room (Stories of O)

Podcast Room

Elevator

Front Doors

Enter Here

Main office

Board Room

Refugee Women Rising Intercultural Senior Center Youth For Greater Good

Davenport Street

Davenport Street

# FESTIVAL INFORMATION

## REGISTRATION/INFORMATION

Staff is ready to answer your questions each day of the Festival at the registration/information center located in the SCC Lobby. The following are also available to you:

- WiFi guest login info
- Rehearsal location information
- Printing/Copying
- Variety show wild card sign up
- Schedules/Transportation info
- Pep-o-mint Lifesaver mints

Registration and Info Center Hours

**5/24** 8:30am - 2:30pm

**5/25** 8:30am - 5:30pm

**5/26** 9:00am - 4:30pm

**5/27** 9:30am - 4:30pm

**5/28** 9:00am - 5:30pm

**5/29** 9:00am - 4:30pm

**5/30** 8:30am - 1:00pm

## TRANSPORTATION/PARKING

MCC has free parking throughout the campus. For registered Festival guests only, a round trip shuttle is available to and from the Fort Omaha campus, Home2 Hotel, and our *Being Black Outside* evening performance. Consult your participant transportation schedule for more information.

## SEVERE WEATHER

Nebraska weather can be unpredictable. Designated severe weather shelter areas are located throughout the buildings on campus. In the event that severe weather occurs, GPTC staff and MCC police officers will direct you to safe areas. For reference, Omaha is located in Douglas County.

## LAND ACKNOWLEDGMENT

The Great Plains Theatre Commons acknowledges that our organization, located on the banks of the Missouri River, is situated on land that is the homeland of the Ponca, Omaha, Pawnee, and Otoe. We pay respect to the Ponca, Omaha, Pawnee, and Otoe peoples, elders, and their ancestors, past, present, and future.

The Great Plains Theatre Commons pays respect to all Indigenous peoples who have stewarded this land throughout the generations, and to their ongoing cultural, intellectual, artistic and spiritual contributions.

The GPTC is grateful and honored to work with the Four Directions Playwright Residency to develop new Native stories from across the country.

## DISCRIMINATION OR HARASSMENT

The GPTC is committed to creating a safe, barrier-free environment for participants. Discrimination or harassment based on or because of race/ethnicity, age, disability, sexual orientation, gender, gender identity, marital status, socioeconomic status, geography, citizenship status, religion, veteran status, or any other protected status is a violation of state and federal law and GPTC policy. Awareness is the only way the GPTC can respond. Your concern will be kept confidential and addressed appropriately as warranted. If at any time during the Festival you have an experience, interaction, or situation that makes you feel uncomfortable, reach out directly to a GPTC staff member, or contact the GPTC staff at 402-714-7522 (Quinn), 917-570-2624 (Kevin), or [commons@gptcplays.com](mailto:commons@gptcplays.com) immediately.

## IF YOU NEED HELP

We ask that everyone attending the Festival keep the highest level of respectful, creative dialogue. If you experience any barriers to that, please let a staff member know so that we can quickly assist you.

# FESTIVAL INFORMATION

## FESTIVAL LOCATIONS

- All daytime events occur at the **Fort Omaha Campus** of Metropolitan Community College (MCC) in the Institute for the Culinary Arts (ICA), Swanson Conference Center (SCC/Building 22) and Building 23  
More details on pages 5 & 6
- The Commons Season performances of *Being Black Outside* will be held at the **Shirley Tyree Theater** (2401 N. 24<sup>th</sup> St)
- Stories of O will be held at **Yates Illuminates** (3260 Davenport St.)
- GPTC's Variety Show will be held at **Benson Theatre** (6054 Maple St.)

## HELPFUL NUMBERS & ADDRESSES

- GPTC Staff: Quinn (402-714-7522) & Kevin (917-570-2624)
- GPTC Hotel Liaison: Ron (573-289-7100)
- Fort Omaha Campus: 5300 N. 30th Street, Omaha, NE 68111
- Home2 Suites: 4440 Douglas Street, Omaha, Nebraska, 68131 (402-504-4848)
- MCC Public Safety/Police: Available 24 Hours (531-622-2222)

## THEATRE WORKSHOPS

Theatre Workshops are a series of hands-on playwriting and performance-related classes designed and led by featured and guest artists. All Theatre Workshops are free and open to the public. Sign up at the registration/information center if slots remain.

## PANELS/MEALS

Luncheon panels are theatre-related discussions with GPTC guest artists. All luncheon panels are free and open to the general public. Community members who would like to join for lunch prepared by the wonderful Culinary team at MCC have the option to pay \$15/day in cash or Venmo at the registration.

## COMMONS SEASON PERFORMANCE

The performance of *Being Black Outside* for national Festival artists is Friday, May 29, and seats have been set aside. For guests staying in Festival housing, transportation is provided, please consult your participant transportation schedule for more information.

## PLAYLABS

These readings are free and open to the public. The daily PlayLab readings are the foundation of the Festival. This year, 10 plays were selected from over 750 submissions. They are rehearsed by directors and actors and then presented as staged readings. Playwrights receive constructive critiques of their work from theatre professionals, scholars, and the general public in a guided-response setting. Each year the PlayLab readings act as a catalyst for many premieres of new American plays both locally and nationally.

## PERFORMANCE ETIQUETTE

Be mindful of those who are performing and attending performances. During readings and performances we ask you to please:

- Arrive on time
- Turn off your cell phone
- Whisper in hallways and lobbies
- Keep feedback concise, thoughtful, and constructive

## NETWORKING AND SOCIAL MEDIA

The most shared piece of advice from past GPTC participants: Connect! We encourage all Festival attendees to get to know fellow attendees. Introduce yourself and make introductions for others. Many past GPTC attendees have found friendships here that have grown into deep personal and professional relationships well beyond the Festival. Please make use of the Whova message boards and take advantage of GPTC social media.

Instagram: @gptcplays  
Facebook: @GreatPlainsTheatreConference  
Use our hashtag: #GPTC2026



# GPTC 2026: SCHEDULE AT A GLANCE

## SUNDAY, MAY 24

9:30AM - 10:30AM	Participant Orientation (Bistro)
10:30AM - 10:45AM	Break
10:45AM - 11:45AM	Responders and Dramaturgs Orientation (SCC 201A)
10:45AM - 11:45AM	PlayLab Playwright Cohort (Building 23, Room 120A)
12:00PM - 1:15PM	Lunch/Panel 1 at 12:30pm (SCC 201B)
1:15PM - 8:00PM	PlayLab Rehearsals (various locations)
6:00PM - 8:00PM	Stories of O, includes dinner (Yates Illuminates)

## MONDAY, MAY 25

9:30AM - 11:00AM	Workshop Session 1 (Blg 23)
11:00AM - 11:15AM	Break
11:15AM - 1:20PM	<i>Beautiful Blessed Child</i> by Daria Miyeko Marinelli PlayLab and Response Session (SCC 201A)
1:15PM - 2:15PM	Lunch (SCC 201B)
2:15PM - 2:30PM	Break
2:30PM - 5:20PM	<i>Headless Nebraska</i> by Chandler Hubbard PlayLab and Response Session (SCC201A)
5:15PM - 6:45PM	Welcome BBQ (Bistro)

## TUESDAY, MAY 26

10:00AM - 12:30PM	<i>Bone by Bone</i> by Sharifa Yazmeen PlayLab and Response Session (SCC 201A)
12:30PM - 1:30PM	Lunch (SCC 201B)
1:30PM - 1:45PM	Break
1:45PM - 4:15PM	<i>The Rink at the End of the World</i> by Megan Tabaque PlayLab and Response Session (SCC 201A)
4:15PM - 4:30PM	Break
4:30PM - 5:30PM	PlayLab Playwright Cohort (Building 23, Room 120A)
5:30PM - 7:00PM	Young Dramatists Dinner (Bistro)
7:00PM - 8:30PM	Young Dramatists Reading (SCC 201A)

## WEDNESDAY, MAY 27

10:30AM - 12:00PM	Workshop Session 2 (Blg 23)
12:00PM - 1:15PM	Lunch/Panel 2 at 12:30pm (SCC 201B)
1:15PM - 1:30PM	Break
1:30PM - 3:50PM	<i>Untitled Superhero Play</i> by Alexis Elisa Macedo PlayLab and Response Session (SCC 201A)
7:00PM - 8:30PM	GPTC Variety Show (Benson Theatre)

## THURSDAY, MAY 28

10:00AM - 12:10PM	<i>TRANSITION; or the Electrolysis Play</i> by Aster Aguilar PlayLab and Response Session (SCC 201B)
12:15PM - 1:15PM	Lunch (SCC 201B)
1:15PM - 1:30PM	Break
1:30PM - 3:00PM	Workshop Session 3 (Blg 23)
3:00PM - 3:15PM	Break
3:15PM - 5:35PM	<i>The Scouts of America Don't Sell Cookies, B*itch</i> by Claire Crowley PlayLab and Response Session (SCC 201A)

## FRIDAY, MAY 29

10:00AM - 12:40PM	<i>Escape Velocity</i> by Eric Schabla PlayLab and Response Session (SCC 201A)
12:30PM - 1:45PM	Lunch/Panel 3 at 1:00pm (SCC 201B)
1:45PM - 2:00PM	Break
2:00PM - 4:45PM	<i>This is How You Capture the Light</i> by Kandace James PlayLab and Response Session (SCC 201A)
7:00PM - 8:30PM	<i>Being Black Outside</i> by Vinecia Coleman (Shirley Tyree Theater)

## SATURDAY, MAY 30

9:30AM - 12:25PM	<i>Disillusioned</i> by Brynne Frauenhoffer PlayLab and Response Session (SCC 201A)
12:30PM - 1:30PM	Lunch (Bistro)
6:00PM - 9:30PM	Closing Celebration with Design Wing Presentation (SCC 201)

## PLEASE NOTE:

- ALL FESTIVAL TIMES ARE CENTRAL TIME ZONE.
- SECURE STREAMING LINKS WILL BE MADE AVAILABLE ON THE WHOVA PORTAL.



## SUNDAY, MAY 24

9:30AM - 10:30AM

**PARTICIPANT ORIENTATION (BISTRO)**

10:30AM - 10:45AM

**BREAK**

10:45AM - 11:45AM

**PLAYLAB ORIENTATION FOR RESPONDERS AND DRAMATURGS (SCC 201A)**

**PLAYLAB PLAYWRIGHT COHORT 1 (BUILDING 23, ROOM 120A)**

12:00PM - 1:15PM

**LUNCH/PANEL 1 (SCC 201B)**

**BRANCHING FARTHER (AND FARTHER) OUT** (Panel begins at 12:30PM)

In a multi-everything world theatre artists are using their skills to create all kinds of work, some of which involves neither a screen nor a stage. Artists will discuss their ventures into other creative mediums and reflect on how it informs their theatrical lives.

Noah Diaz, Raphael Mishler, Ellen Struve

Moderated by: Khalid Y. Long

1:15PM - 8:00PM

**PLAYLAB REHEARSALS (VARIOUS LOCATIONS)**

6:00PM - 8:00PM

**STORIES OF O**, includes dinner (YATES ILLUMINATES, COMMUNITY ROOM)

You're invited to an evening of in-person community, shared food, and great stories. The night is a laid back evening with food, drink and stories. An important point – there is no obligation to share a story. Feel free to come and enjoy the night, the food, and the community without telling a story.

This month's theme is: **Stories of Revelation.**

Additional details on page 20.

## MONDAY, MAY 25

9:30AM - 11:00AM **WORKSHOP SESSION 1 (BUILDING 23)**

**ELIZA BENT (BUILDING 23, ROOM 240)**

**Altars, Egos, and Alter Egos (Capacity 15)**

Writers are often told to "write what they know," but if selfhood is myth, where does this leave us? Alter Egos can provide a portal for mischief when it comes to written works, casting open new perspectives and yet-to-be imagined realities. In this workshop, Bent explores embodied writing that dances between the left and right sides of the brain.

**SARAH MANTELL (BUILDING 23, ROOM 120A)**

**Tackling the Impossible (Capacity 15)**

Have you ever been handed an artistic problem to solve...and loved it? How often has a problem led you to something way more interesting than you would have made otherwise? How do you stage a singing clam? How many ways can you think of to age an actor without them leaving the stage? This multi-disciplinary workshop is designed for writers, designers, actors, directors, and multi-hyphenate artists. We will create prompts for each other, think up impossible new challenges, and maybe even switch roles.

11:00AM - 11:15AM

**BREAK**

11:15AM - 1:20PM

**PLAYLAB AND RESPONSE SESSION (SCC 201A)**

**BEAUTIFUL BLESSED CHILD by Daria Miyeko Marinelli**

Dramaturg: Martine Kei Green-Rogers

Co-Directors: Anna Dragon & Jackie Kappes

Design Wing: Li Yiyuan

Respondents: Eliza Bent, Harrison David Rivers

Room Host: Eva Quam

**CAST**

AIMIKO: Anna Dragon

SHARON: Cecilia Poon

STAGE DIRECTIONS: Eric Quam

Synopsis: Aimiko has never taken a road trip with their Mom. Sharon has never seen nor heard of any sort of mother-daughter child road trip. And so, our brave pioneers take to the road, driving West, 10 miles per hour above the speed limit, with tales of cannibals and crane wives, buzzing over the airwaves, offering avenues of survival, all of which are only moderately helpful when Aimiko's car radiator suddenly goes dead. This is their story. Kind of. And again. And again.

**ALL FESTIVAL TIMES ARE CENTRAL TIME ZONE.**

# DAY BY DAY SCHEDULE

14

## MONDAY, MAY 25 (CONT)

1:15PM - 2:15PM  
**LUNCH** (SCC 201B)

2:15PM - 2:30PM  
**BREAK**

2:30PM - 5:20PM  
**PLAYLAB AND RESPONSE SESSION** (SCC 201A)  
**HEADLESS NEBRASKA** by Chandler Hubbard

Dramaturg: Kat Zukaitis  
Director: Colt Neidhardt  
Design Wing: Oriana Lineweaver  
Respondents: Noah Diaz, Jaclyn Backhaus  
Room Host: Eva Quam

### CAST

MILLIE: Laura Leininger-Campbell  
JOSH: Aiden Poling  
ROBIN: Moira Mangiameli  
ANDRE: Raydell Cordell III  
STAGE DIRECTIONS: Addie Barnhart

Synopsis:  
The First Chance Wasn't Enough. Now you've got a Second Chance. Use it wisely.

5:15PM - 6:45PM  
**WELCOME BBQ** (BISTRO)



## TUESDAY, MAY 26

10:00AM - 12:30PM  
**PLAYLAB AND RESPONSE SESSION** (SCC 201A)  
**BONE BY BONE** by Sharifa Yazmeen  
Dramaturg: Khalid Y. Long  
Director: Wai Yim  
Design Wing: Li Yiyuan  
Respondents: Harrison David Rivers, Jaclyn Backhaus  
Room Host: Eva Quam

### CAST

FAYROUZ: June Romero  
MUNA: Skyler Seiler  
YASIR: Qadir Khan  
CHRIS: Dennis Stessman  
STAGE DIRECTIONS: Wai Yim

Synopsis:  
Visions of another couple who lived within an abandoned attic's walls intertwine with Chris and Muna's secrets, until Fayrouz and Yasir find old life reflected in the attic's new inhabitants. Histories collide, spirits take hold, and the attic forms its own space in time somewhere between what was and what is in this examination of sex, shame, and the cost of being okay.

12:30PM - 1:30PM  
**LUNCH** (SCC 201B)

1:30PM - 1:45PM  
**BREAK**

1:45PM - 4:15PM  
**PLAYLAB AND RESPONSE SESSION** (SCC 201A)  
**THE RINK AT THE END OF THE WORLD** by Megan Tabaque

Dramaturg: Kat Zukaitis  
Director: Breanna Carodine  
Design Wing: Ari Cleaveland  
Respondents: Sarah Mantell, Jaclyn Backhaus  
Room Host: Eva Quam

### CAST

SUZANNE: Tatiana Sandoval  
NATALIE: Sophie Thomas  
CHRISTINA: Emma Riley  
NIKKI: Stephanie Vanderbeek

TALL HEATHER: Belle Rangel  
AMANDA: Nina Washington  
COACH WILL: Billy Ferguson  
COACH NOREEN: Addie Barnhart  
STAGE DIRECTIONS: Abby Hargiss

## TUESDAY, MAY 26 (CONT)

### Synopsis:

When an entire country club of athletes get taken out by a rogue bout of measles, a motley crew of mall-rink figure skaters find themselves on a flight to Croatia to compete in the World Synchronized Figure Skating Championships as first-alternates. As they train, complain, destroy, and rebuild each other on their quest to achieve the impossible, something even darker looms on the edges of the global stage: a nuclear arms race.

4:15PM - 4:30PM

### **BREAK**

4:30PM - 5:30PM

**PLAYLAB PLAYWRIGHT COHORT 2** (BUILDING 23, ROOM 120A)

5:30PM - 7:00PM

**YOUNG DRAMATISTS EVENING DINNER** (BISTRO)

7:00PM - 8:30PM

**YOUNG DRAMATIST READING** (SCC 201A)

**THE LAST MEETING** by Basil Woodson

Director: Madison Roman

Dramaturg: Kat Zukaitis

Design Wing Fellow: Oriana Sophia

Mentor Actor: Raydell Cordell III

### Synopsis:

Ellis comes up to Callisto and Erin with an idea of a board game club. However, some struggles get in the way. With an internal struggle of Erin and Callisto's identity, the world within and around them grows complicated with an attempt to start the club. Along with that, the INSIDIS pandemic grows faster causing sickness around them.

### **CAST**

CALLISTO: Aniyah Skanes

ELLIS: Dav Lee

ERIN: Silver Poast

MR. LINWOOD: Raydell Cordell III

MISTY/STAGE DIRECTIONS: Caleb Williams

*GPTC is grateful to Mark and Brenda Erhart for their sponsorship of the Young Dramatist Reading this year.*

## WEDNESDAY, MAY 27

10:30AM - 12:00PM

**WORKSHOP SESSION 2** (BUILDING 23)

**HARRISON DAVID RIVERS** (BUILDING 23, ROOM 240)

**Getting Unstuck (Capacity 15)**

The poet William Carlos Williams once wrote, "no ideas, but in things," asserting that only tangible "things" and behaviors could create concrete images in the mind. In this workshop, we will apply this poetic principle to the art of playwriting – using concrete images to access narrative power.

**WAI YIM** (BUILDING 23, ROOM 120A)

**TAROTable Ideas (Capacity 13)**

Explore playwriting through Tarot-inspired exercises that spark new ideas, deepen conflict, and heighten tension. Ideal for refreshing your existing works, this workshop welcomes all experience levels in both Tarot and Playwriting. Bring your favorite Tarot deck or borrow one provided in the session. It's not a terrible idea— it's a TAROTable one! Free your creative subconscious, unlock inspiration, and let's get that draft done! Tarot never lies.

12:00PM - 1:15PM

**LUNCH/PANEL 2** (SCC 201B)

**GROWING YOUR OWN** (Panel begins at 12:30PM)

Artists discuss ways they've found to create opportunities and sustain their practices outside of established institutions.

Jaclyn Backhaus, Eliza Bent, Sarah Mantell

Moderated by: Martine Kei Green-Rogers

1:15PM - 1:30PM

### **BREAK**

1:30PM - 3:50PM

**PLAYLAB AND RESPONSE SESSION** (SCC 201A)

**UNTITLED SUPERHERO PLAY** by Alexis Elisa Macedo

Dramaturg: Martine Kei Green-Rogers

Director: Darlyn Gonzalez

Design Wing: Oriana Sophia

Respondents: Noah Diaz, Sarah Mantell

Room Host: Verla Collier

# DAY BY DAY SCHEDULE

16

## WEDNESDAY, MAY 27 (CONT)

### CAST

RICARDO/OFFICER 3/EL LUCHADOR: Angel Hernandez

ARSENIO/OFFICER 2: Efen Gonzalez

ABUELITA/OFFICER 1/LA MOMIA: Marina Rosado

MRS. HAM: Sophia Hernandez

MARICELA: Kenya Leon

GUADALUPE/LA BEASTIA: Isa Gott

ALBA/LA MARIPOSA/BETSY: Alyssa Gonzalez

STAGE DIRECTIONS: Katie Cameron

### Synopsis:

Coming from a long line of super heroes disguised as campesinos, Maricela dreams of the day she'll have the super powers her family has hidden. When Maricela is taken out of the fields and put into public school her family is terrified that their secret identities will be revealed. Maricela's world is shattered as she struggles to fight for what she believes is right in a world she doesn't understand. Blending childhood imagination with harsh reality, Macedo's play redefines heroism, honoring the daily resilience, tenacity, and determination of Mexican immigrants that make them everyday heroes.

7:00PM - 8:30PM

**GPTC's FOURTH ANNUAL VARIETY SHOW (BENSON THEATRE)**

Additional details found on page 22.

## THURSDAY, MAY 28

10:00AM - 12:10PM

**PLAYLAB AND RESPONSE SESSION (SCC 201A)**

**TRANSITION; or The Electrolysis Play by Aster Aguilar**

Dramaturg: Martine Kei Green-Rogers

Director: Carina DuMarce

Design Wing: Ari Cleaveland

Respondents: Eliza Bent, Sarah Mantell

Room Host: Verla Collier

### CAST

APPHIA: Skyler Seiler

BERTIE: Kathleen Combs

URSULA: Marina Rosado

STAGE DIRECTIONS: Allana G. Pommier

### Synopsis:

A trans woman (Apphia) struggles through her first session of genital electrolysis, in preparation for bottom surgery. Between the beeps of the unrelenting needle, she juggles the opinions of her eccentric electrologist (Bernie), her own insecurities, and the rising uncertainty of whether she can even sit for a second longer.

12:15PM - 1:15PM

**LUNCH (SCC 201B)**

1:15PM - 1:30PM

**BREAK**

1:30PM - 3:00PM

**WORKSHOP SESSION 3 (BUILDING 23)**

**NOAH DIAZ (BUILDING 23, ROOM 240)**

**Distillation (Capacity 15)**

Can you write a ten-word sentence in eight? In seven? In three? Can you remove dialogue altogether and still communicate the essential information? This workshop focuses on cutting, distillation, and discovering the essential gesture within a scene. Through a series of exercises and close revisions, we'll experiment with reducing dialogue and exposition until the language becomes sharper and more impactful, revealing what's actually driving the work beneath the surface of the writing. Rather than approaching compression as minimalism for its own sake, this workshop treats reduction as a way of increasing clarity, momentum, tension, and theatrical impact. We'll explore how less language can create more space for surprise. Participants should bring 2 to 3 pages of dialogue or a monologue of moderate length to revise and work on during the session.

**JACLYN BACKHAUS (BUILDING 23, ROOM 120A)**

**Snack Drafts (Capacity 15)**

Using generative impulses, writers shall excavate their lists of personal faves, personal hates, personal guilty pleasures, and questions and topics that keep them up at night, all while using those lists to craft a brand new playworld and story. Let's make a play from our favorite things!

3:00PM - 3:15PM

**BREAK**

3:15PM - 5:35PM

**PLAYLAB AND RESPONSE SESSION (SCC 201A)**

**THE SCOUTS OF AMERICA DON'T SELL COOKIES, B\*TCH by Claire Crowley**

# DAY BY DAY SCHEDULE

17

## THURSDAY, MAY 28 (CONT)

Dramaturg: Kat Zukaitis  
Director: Zoella Sneed  
Design Wing: Ezekiel Clare  
Respondents: Eliza Bent, Noah Diaz  
Room Host: Verla Collier

### CAST

JOE: Thomas Gjere  
DYLAN: Corbin Griffin  
BENNY: Alex Beil  
JARED: Randall Johanningsmeier  
EFFIE: Nyarok "Rayn" Tot  
STAGE DIRECTIONS: Ren Brown

### Synopsis:

This play interrogates the relationship between capitalism and violence through the lens of American Youth. Effie, a scrappy eleven-year-old, decides to join the Scouts of America during a super duper hot summer, yuck. Excited to learn new skills and make friends with boys (WOAH!), Effie enters with an intensity that surprises her troop leader, Joe, and scares some of her fellow scouts. As she traverses this unfamiliar landscape, she battles assumptions and underestimations of her personhood.

## FRIDAY, MAY 29

10:00AM - 12:40PM

### PLAYLAB AND RESPONSE SESSION (SCC 201A)

#### ESCAPE VELOCITY by Eric Schabla

Dramaturg: Khalid Y. Long  
Director: Adam Bassing  
Design Wing: Ari Cleaveland  
Respondents: Noah Diaz, Harrison David Rivers  
Room Host: Nessie Mass

### CAST

MILES: Nick LeMay  
CLEO: Shailoh Eggerson  
GARTH/BROTHER WHITAKER: Ben Beck  
GALENA/DOCTOR BURROWS: Kathleen Combs  
THE REMNANT/STAGE DIRECTIONS: Kenny Ray Williams

### Synopsis:

An ambitious physics postdoc studying the thermodynamics of black holes must regain stability, find a renewed sense of purpose, and reckon with past tragedy as his life begins to unravel.

12:30PM - 1:45PM

### LUNCH/PANEL 3 (SCC 201B)

#### NEW PLAYWRIGHT DEVELOPMENT ORGANIZATIONS Q&A

(Panel begins at 1:00PM)

From Playwright's Center: Christopher Bineham (Director of Advancement) & Harrison David Rivers

From NNPN: Nan Barnett (Executive Director)

Facilitated by Kat Zukaitis

1:45PM - 2:00PM

### BREAK

2:00PM - 4:45PM

### PLAYLAB AND RESPONSE SESSION (SCC 201A)

#### THIS IS HOW YOU CAPTURE THE LIGHT by Kandace James

Dramaturg: Martine Kei Green-Rogers

Director: Kathy Tyree

Design Wing: Ezekiel Clare

Respondents: Harrison David Rivers, Sarah Mantell

Room Host: Nessie Mass

### CAST

SILVIA/SILVER: Liza Barr

BIG GRANDMAMA: Camille Metoyer Moten

KAIARI: Nyarok "Rayn" Tot

JACK/CALVIN/ODELLE: Jus B

DEE/LITTLE DEE: Aisha Lomax

ROBIN/RABBITS/STAGE DIRECTIONS: Xena Broaden

### Synopsis:

Big Grandmama is dead. Big Grandmama is dead. Now, Silvia's back in this house made up of memories. Memory is like a cord that stretches across time. Maybe it doesn't stretch, more like swells, like a body of water or music. On the other side of that memory, is her younger self, Silver, and her Big Grandmama is still alive. The house, like God, holds both sides in the palm of their hand. This play is an exploration of the Black women who came before me, who owned homes, and made them sacred. It examines what happened to these spaces when they passed on. It is important work to chronicle oneself, and through letters, poems, and the planting of things, Big Grandmama teaches Silvia to do just that. Memory work is a way of calling forth our ghosts. It is manifesting but turned on its side.





# EVENING EVENTS

# The Stories of O



*SUNDAY, MAY 24 AT YATES ILLUMINATES*

*THIS MONTH'S THEME IS: STORIES OF REVELATION*

You're invited to an evening of in-person community, shared food, great stories and live music. The night is a laid back evening with food, drink and stories. Held on the last Sunday evening of each month at Yates Illuminates (3260 Davenport). An important point – there is no obligation to share a story. Feel free to come and enjoy the night, the food, and the community without telling a story.

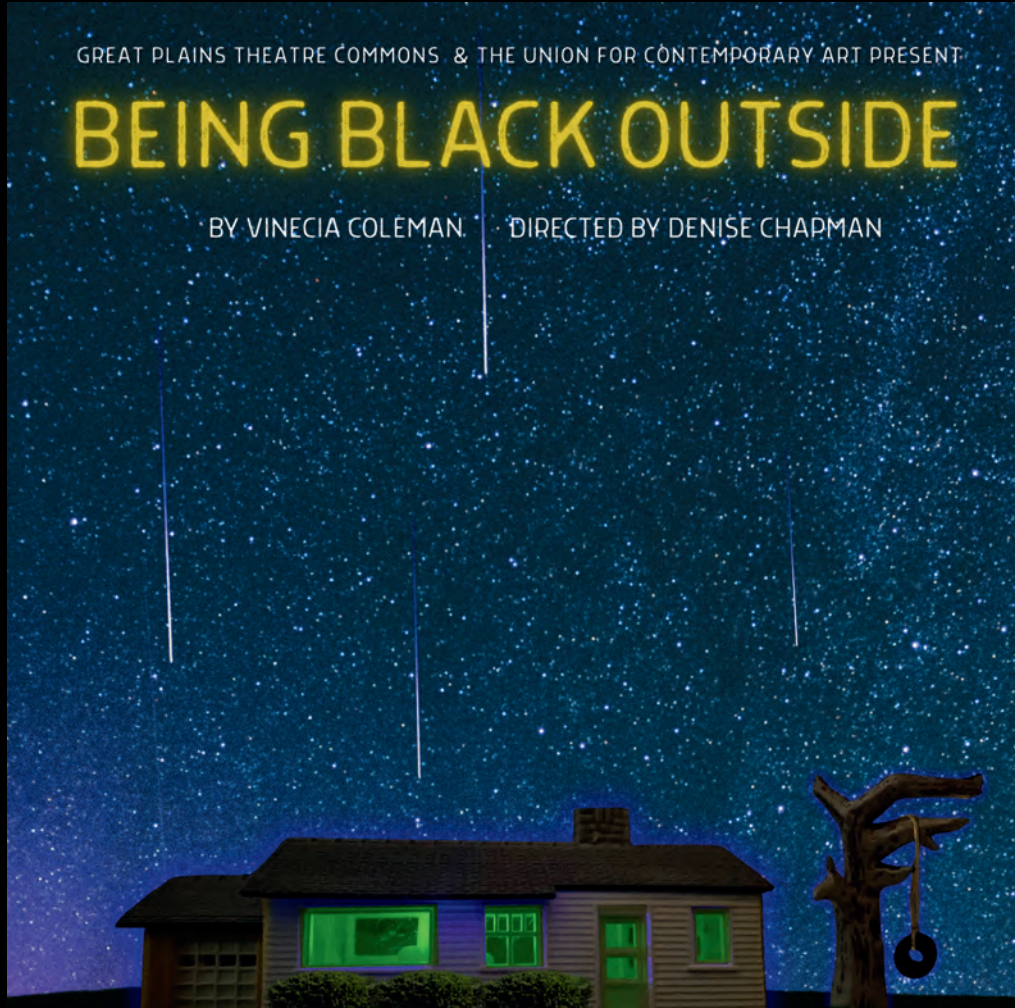
If you do bring a story, here are some guiding thoughts:

- The stories should be true, rather than fiction
- Have some strong connection to your life
- They should be around five minutes long
- And told from memory (without notes)

GREAT PLAINS THEATRE COMMONS & THE UNION FOR CONTEMPORARY ART PRESENT

# BEING BLACK OUTSIDE

BY VINECIA COLEMAN DIRECTED BY DENISE CHAPMAN



Even at the end of the world, nothing is more dangerous than being Black...outside.

MAY 27-JUNE 14, 2026

SHIRLEY TYREE THEATER | 2401 N. 24<sup>TH</sup> ST

CAST: TAMMYRA', ASIA NARED, ROZ PARR, MEILANI HUGHES

DEVELOPED AS A PART OF THE 2024 GPTC NEW PLAY FESTIVAL



TICKETS →



2025/2026 Commons Season Production

A season of free contemporary theatre premieres for Omaha audiences.

*Being Black Outside*  
by Vinecia Coleman

**FESTIVAL NIGHT: FRIDAY, 5/29, 7:00PM - 8:30PM**

Directed by Denise Chapman

Shirley Tyree Theater | 2401 N. 24th Street, Omaha, NE

A workshop premiere co-production with Great Plains Theatre Commons and The Union for Contemporary Art. Developed as a PlayLab for the 2024 GPTC New Play Festival.

*Even at the end of the world, nothing is more dangerous than being Black...outside. Sisters Vee and Niecy return to their childhood home after their mother dies — just in time for the apocalypse. As the sisters face the end, remember the past, and debate the future, they meet their mother's neighbor and are forced to contend with what it means to be Black...outside.*

We're grateful to the generous production sponsors:

**Roger and Kate Weitz, Diane Watson, Transamerica Foundation**

Director: Denise Chapman

Stage Manager: Garrison York

Cast: TammyRa', Asia Nared, Roz Parr, Meilani Hughes

Scenic Design: Kevin Lawler

Sound Designer/TD: Mike Coopridner

Projection Designer: Luis Garcia

Costume Designer: Jenny Pool

Scenic Painter/Props Designer: Michael Clark

Scenic Painter: Craig Lee

Johan LeClerc: Set Build

House Managers: Eric Jordan, Steve Knox

The show will run approximately 90 minutes with no intermission.

All public performances are at the Shirley Tyree Theater, 2401 N. 24th Street.

Livestream will take place on Thursday, May 28th. Information can be found on the Whova Festival Agenda.

GPTC's

HOSTED BY BEAUFIELD BERRY

# VARIETY SHOW

Benson Theatre (6058 Maple)



5/27/25 @ 7:00pm

Variety show of local and national artists during the Great Plains Theatre Commons New Play Festival.

*Drag! Comedy! Dance! Music! and more!*

*Eliza Bent, E Rawq, Sean Flaherty, Braden Rapp,  
Lil' A-Tre, Blue Stocking, Tyrone Harper, Venus Thightrapp,  
Wendy Mendoza, Juana Vi Mii and more to come.*



G/P  
T/C

GP  
NPF

G/P  
T/C

*Great Plains Theatre Commons New Play Festival*

# CLOSING CELEBRATION

Join us for the culmination of the Festival where we will share a meal, raise a glass to the plays and artists that made the week possible, experience an installation from the Design Wing, and get our groove on.

*McDowell Award Recipient: Steven L. Williams  
Featuring Music By: JordanTheNinja & Friends  
Food By: The Institute for the Culinary Arts (MCC)*

---

*Saturday, May 30, 6:00pm - 9:30pm*

*MCC's Fort Omaha Campus*

*Swanson Conference Center (Building 22)*





# PLAYWRIGHTS

26



**ASTER AGUILAR**  
*TRANSITION;*  
*or The Electrolysis Play*

**Aster Aguilar (she/her)** is a playwright, screenwriter, performer, and LGBTQ+ community advocate from Wilbraham, Massachusetts—which is unfortunately more similar to Connecticut than Boston, but now she lives in Boston, so it all worked out. Her full-length plays include *Chimera*, *TRANSITION (or The Electrolysis Play)* (Semifinalist, O’Neill NPC 2025), *Willing and Ready* (Solomon Fellowship for LGBT Studies), and *transubstantiation* (Yale Playwright’s Festival). Her shorter plays include *The Gig* (commissioned by the Yale Cabaret) and *A Neo-Vagina Monologue* (Winner! 49th Samuel French OOB Festival; published with Concord Theatricals). While at Yale, she studied playwriting under MJ Kaufman, Deb Margolin, and Branden Jacobs-Jenkins. Now, she’s at Boston University working towards her Masters of Social Work. Reach out to her through email (AjAguilar940@gmail.com), New Play Exchange (@Aster Aguilar), or Letterboxd (@aster\_oid). Proud member of the Dramatists Guild!



**CLAIRE CROWLEY**  
*The Scouts of America*  
*Don’t Sell Cookies, B\*tch*

**Claire Crowley** is a New York-based playwright and screenwriter from the ocean and mountains of New England. Sometimes she writes dark comedies, and sometimes she writes drama, but always their plays are centered on themes of violence and money, grief and loss, hypocrisy and power, (dis)belonging and home, community and friendship and queerness. Her plays have been developed with Primary Stages, The Tank, Playwrights Realm, Oregon Contemporary Theatre, Chicago Dramatists, and The Barrow Group. She is a member of Living Radio Plays, The Playwrights Group, and F.A.B. at The Barrow Group. Claire loves being outside, binge watching tv, treating biking in NYC like a fun little video game, making herself do improv at the Upright Citizens Brigade, performing sketch comedy with their team The Fourth Space, and singing cabaret-style at Don’t Tell Mama.

# PLAYWRIGHTS

27



**BRYNNE FRAUENHOFFER**

*Disillusioned*

**Brynne Fraenhoffer** is a Chicago-based playwright. Past productions of her work include *Pro-Am* (First Floor Theater, 2024; winner of the 2025 Jeff Award for New Work; included on The Kilroy List 2020), and *Bury Me* (Dandelion Theatre, 2019). She wrote *Disillusioned* as a member of Goodman Theatre's New Stages Residency 2023. Other workshops and readings include *Synchronicity* (Salt Lake Acting Company; 2018 Semi-Finalist for the O'Neill Center's National Playwrights Conference), *Church Hurt* (Black Cat Theatre), *Exorcise* and *Vape Naysh* (First Floor Theater), and *Pizza Hut Heartbreaker* (Commission Theatre Company). Her short plays have been produced by Broken Nose Theatre, MadLab, American Blues Theater, Commission Theatre, and the Chicago One-Minute Play Festival. She is a proud company member with First Floor Theater. Currently, she is developing her new play *Upline* through Avalanche Theatre's Next Draft series.



**CHANDLER HUBBARD**

*Headless Nebraska*

**Chandler Hubbard (he/him)** is an actor and internationally-produced playwright from Richmond, Virginia. Written works produced include: *Animal Control* (2019 Martha Hill Newell Playwright's Fund, Richmond Theatre Community Circle Best Original Work Nomination, 2020 American Theatre Critics' Association/Steinberg New Play Award Citation, Firehouse Theatre); *The Minotaur* (Rumpu/Firehouse); *MAN: The Live Podcast* (Firehouse/Jackleg Media); *Roman à Clef* (RTCC Best Original Work Winner 2024, The New Theatre at Firehouse); *Shanidar* (Wild Imaginings); *Small Quiet Good* (Brightpoint Community College); *Barbary Lion* (Seed to Stage). Readings/Workshops/Festivals/Awards include: *Animal Control* (American Lives Theatre), *Telling of the Bees* (5th Wall Theatre; Barter Theatre; College of Charleston; Forestburgh Playhouse In the Woods; 2024 Judith Royer Excellence In Playwriting Award Finalist), *Molly House* (Richmond Triangle Players), *Akeldama* (IATI, Inkwell Theater), *Small Quiet Good* (Firehouse Theatre; Dragonfly Theatre Company; Clamour Theatre Company), *Your Son* (Firehouse Theatre), *Swamp Sparrow* (TheatreLAB), *Sunday The Thirtieth 3AM Raining Slightly Drunk* (Wild Imaginings; Richmond Triangle Players), *Children of the Empire* (Fulton Theatre); *Headless Nebraska* (Dartmouth's 2025 Neukom Institute Literary Arts Award Honorable Mention); *The Cuck* (Firehouse Theatre) and *The Last Queen of San Domino* (Theatre Lab at Florida Atlantic University's Fair Play Commission, both 2025 and 2026). His film SHANIDAR (Remember Tommy Productions, Mudroom Films and SideXSide Productions) premiered at the Richmond International Film Festival in 2025. Chandler is a graduate of the University of Virginia (2012) and a proud member of the Dramatists Guild.

# PLAYWRIGHTS



**KANDACE JAMES**

*This is How You Capture the Light*

**Kandace James** is a multi-hyphenate writer, who uses a poetic lens as a tool for telling magical realistic stories. She writes about Black and queer life, removed from the white gaze. She writes about freedom - not what you do with it, but how you get to it. She writes stories about resilience, that follow characters on their journey to access utopia/light/the soul. What needs to be wrestled with, broken down, and overcome, to get there. At times, her stories feel like a eulogy. Other times, they feel like a baptism, a family reunion. But they always feel like coming home. Her play, *This Is How You Capture The Light*, was awarded The Hip Hop Theatre Creator Award, One-Act, The Rosa Parks Playwriting Award, One-Act, and The Darrell Ayers National Playwriting Award, One-Act. She was a National Finalist for the John Cauble Award for Outstanding Short Play, as well as The John Cauble Award for Outstanding Short Play for *This Is How You Capture The Light* at the Kennedy Center American College Theater Festival Nationals (KCACTF). Her screenplay STELLAR COLLISION received the \$25,000 First Place Award in the 2022 Alfred P. Sloan Script Competition at Carnegie Mellon University and was nominated for the 2023 Sloan Student Grand Jury Prize. James was a 2023 Core Apprentice, a 2024 MacDowell Fellow and a 2025 Vermont Studio Center Dramatic Writer Fellow. Her play, *Little Black Kids Don't Go Outside*, has been selected for the Voices of Women Theatre Festival. She wants so much for her ancestors' lives to have been full of joy. She wants and she wants, and yet she knows it is highly possible that it wasn't. Her writing is an altar for them.



**ALEXIS ELISA MACEDO**

*Untitled Superhero Play*

**Alexis Elisa Macedo** - worth every letter - is an unapologetic, produced, and published Chicana playwright, producer and performer. She's a National Theater Institute Alum (Spring '20, Theatermakers '22) and has her BA in Theater Arts - Acting Emphasis (Fresno State '21). Macedo is a Latinx Playwrights Circle Intensive Mentee and was awarded the Sewanee Writers' Conference - SolProject Fellowship, Individual Artist Fellowship from the California Arts Council. Her play credits include: *Untitled Super Hero Play* (Latinx Playwrights' Circle, High Desert, New Mexico State University), *Aqui Estamos* (Dallas College - Phi Theta Kappa Honor Society) *CHICANA LEGEND* (The Fools Collaborative, SheATL), *Red Hood(ie)* (Lime Arts Productions 20x20 Fringe, published by Next Stage Press) and *Under the Sheet* (Moxie NYC Arts), and numerous other bilingual student play commissions that students in the Providence, RI Public School District have performed. You can find more of Macedo's work on Youtube, NPX and her website. [www.alexiselisamacedo.com](http://www.alexiselisamacedo.com). Not too bad for a little brown girl from Reedley, California.

# PLAYWRIGHTS



**Daria Miyeko Marinelli (they/she)** is a playwright, screenwriter, and climate activist who tells stories about renegades, belonging, and new frontiers. Daria's theatrical work has been performed at La Jolla Playhouse's WOW Festival, Beyond the Realm with The Playwright's Realms, Atlantic Theatre Company, Ensemble Studio Theatre, HERE Arts Center, and EST-LA, among others. Mx. Marinelli has developed work with Cirque du Soleil, Roundabout Theatre Company, The Playwright's Realm, Fault Line Theatre, The New Group, Seven Devils Playwriting Conference, IAMA, Boston Court Pasadena, The Kennedy Center, SPACE on Ryder Farm, The New Harmony Project, Virginia Center for the Creative Arts, and Stillwright. As a screenwriter, Daria has developed work with Antoine Fuqua's Hill District Media, and their original pilot was a The Black List's NRDC Climate Storytelling Fellowship Finalist and The Sloan x Sundance Episodic Lab Finalist. They are a recent winner of The Ollie Award from The Bret Adams & Paul Reisch Foundation, serve on The Board of Directors for The New Harmony Project and Fault Line Theatre, and hold a BA from Brown University and an MFA in Playwriting from The University of Texas at Austin. While based in LA, Daria is forever a New Yorker at heart.

**DARIA MIYEKO MARINELLI**  
*Beautiful Blessed Child*



**Eric Schabla** is a Los Angeles-based writer/performer, and a recent graduate of the American Film Institute's screenwriting program, where he received the 2025 AFI Writers' Room Ready Award. As a playwright and actor, he has worked with theaters across the country, including the Guthrie, Chicago Shakespeare Theatre, American Players Theatre, Forward Theatre, the Utah Shakespeare Festival, Milwaukee Chamber Theatre, et al. His screenplays have been recognized by the Academy Nicholl Fellowship, the Austin Film Festival, Screencraft, and Coverfly's RED LIST. Additionally, his work on narrative short films has been seen at Tribeca, the American Pavilion at Cannes, LA Shorts International, and Atlanta Shortsfest, among many others. He has adapted foreign films and television for Netflix, Disney+, Amazon, and the French network TF1. He is also a published poet. Originally from the midwest, Eric spent many childhood summers working on his aunt's miniature donkey farm in Blair, NE. He feels a close kinship with the humble jackass.

**ERIC SCHABLA**  
*Escape Velocity*

# PLAYWRIGHTS

38



**MEGAN TABAQUE**

*The Rink at the End of the World*

**Megan Tabaque** is a Filipina-Canadian-American playwright, actor, and educator. Her plays include *Cycle Play* (Mirrorbox), *Decapitations* (Salvage Vanguard), *Britney Approximately: A Pop Greek Tragedy* (Theater Emory), *The Melvin Invention* (Alliance), *Marry Me*, *Bruno Mars* (dev. Theatrical Outfit, Texas State University), *The Rink at the End of the World* (dev. The Road, UCSB Launchpad), among others. Her work has also been developed, commissioned, and produced by Tofte Lake Center (MN), The Workshop Theater (NYC), Rogue Machine Theater(LA), the Museum of Human Achievement (ATX), Seven Devils (ID) and beyond. She is a James A. Michener Fellow, Kundiman Fellow, Emory Playwriting Fellow, and a recipient of a 4 Seasons Residency. She has an MFA in Playwriting from the Michener Center for Writers and lives in Los Angeles where she's an Assistant Professor of Playwriting, Screenwriting, and Acting at UC Riverside.



**SHARIFA YAZMEEN**

*Bone by Bone*

**Sharifa Yazmeen (she/her)** is a trans Arab-American playwright, director, and actor whose work explores the intersection of Queer and Arab identities. Her plays have been published in *Overheard*, a collection of monologues by and for TNB2S+ artists, and in both editions of the Methuen Drama Book of Trans Plays. Her play *Close to Home* was distinguished by the American Theatre Wing at the Antoinette Gala, included on the 2023 Kilroy's List, and selected for the 2023 Bay Area Playwrights Festival and the 2024 National New Play Showcase. She is the inaugural recipient of the SCDF Barbara Whitman Award (2021) and the 2024 Abe Burrows Award. As a director, she has completed fellowships with The Drama League, Actors Theatre of Louisville, Manhattan Theatre Club, Geva Theatre, and was a Eugene O'Neill National Directing Fellow. She holds an MFA in Directing from Brown/Trinity Rep and is currently a Jerome Fellow at the Playwrights' Center. [www.sharifayazmeen.com](http://www.sharifayazmeen.com)



# GUEST ARTISTS



**JACLYN BACKHAUS**  
*Guest Artist*

**Jaclyn Backhaus** is a playwright, screenwriter, and educator hailing from Phoenix, Arizona. Her Off-Broadway plays include *Out of Time* produced by NAATCO at The Public Theater, directed by Les Waters, *Wives*, produced at Playwrights Horizons, directed by Margot Bordelon, *India Pale Ale*, produced by Manhattan Theater Club, and the Winner of the 2018 Horton Foote Prize, directed by Will Davis, *Men on Boats*, produced by Clubbed Thumb and Playwrights Horizons, directed by Will Davis, *Folk Wandering* produced by Pipeline Theater, directed by Andrew Neisler, and *You on the Moors Now* produced by TRE, directed by John Kurzynowski. Other plays include *Dana During Tech Week*, *The Collectivists*, *Heathcliff!!*, and *End-of-Life*. Her work for TV/film includes AS FAR AS THE EYE CAN SEE, a selection for the Sundance Episodic Intensive 2025, and PREETI POPPED IT a selection for the 1497 Features Lab. She has developed TV, Film, and Theater projects with Hillman Grad, JJ Abrams and Bad Robot, Alex Timbers, MacArthur Genius Grant winning Choreographer Okwui Okpokwasili, and Academy Award nominee Stephanie Hsu. She is an adjunct professor of playwriting at NYU's Tisch School of the Arts in both the Department of Dramatic Writing and the Department of Drama, a creative director and co-founder of the arts incubator group Fresh Ground Pepper NYC, and the editor of the theater zine @oootheater. She was the 2016 Tow Foundation Playwright-in-Residence at Clubbed Thumb, a former core member of The Kilroys, and she is currently a New Dramatists resident playwright.



**ADDIE BARNHART**  
*Intimacy Consultant*

**Addie Barnhart (she/her)** is a multi-disciplinary generalist originally from Wichita, KS who shares her creative impulses as an actor, director, educator, voiceover artist, dialect coach, and intimacy choreographer. Her recent intimacy coordination credits include HVAC (selected for Poppy Jasper International Film Festival, Salem Horror Fest, and Philadelphia Indie Film Festival) and MISOPROSTOL by local writer Beaufield Berry. Addie has worked across the United States with companies such as Virginia Repertory/Cadence Theatre, Richmond Shakes, Playmaker's Theatre, TheatreLAB, Swine Palace, and many others along the way. Her passion for education and teaching life skills through theatre was the gateway to a master's degree at Louisiana State University where she earned an M.F.A. in Acting. Addie is Associate Professor of Theatre at Creighton University and serves on the board of representatives for [River City Mixed Chorus](#) and [queerPOPERA](#). [www.addiebarnhart.com](http://www.addiebarnhart.com)

# GUEST ARTISTS



**ELIZA BENT**  
*Guest Artist*

**Playwright/performer Eliza Bent** is the love-grandchild of Lily Tomlin, Pee Wee Herman, and Mr. Peanut, whose Bentertainments include solo works, plays, adaptations, and hybrid affairs. These have been developed, workshopped, and produced at the Abrons Arts Center, the New Ohio, the Atlantic Theatre, the Bushwick Starr and New York Theatre Workshop's Next Door Series. Residencies: MacDowell, SPACE on Ryder Farm, New Georges, Target Margin Institute Fellow, Goodman Theatre Playwrights Unit. Bent's short film SUMMER'S LAST SWIM was an official selection for the 2023 Downtown LA Film Festival. As a performer Bent has toured internationally with the Obie-award winning ensemble Half Straddle. BA in philosophy from Boston College, MFA in playwriting from Brooklyn College. On faculty at Northwestern University's Radio TV & Film department.



**DILLON CHRISTOPHER CHITTO**  
*Four Directions*  
*Resident Playwright*

**DILLON CHRISTOPHER CHITTO (he/him)** is a Mississippi Choctaw, Laguna, and Isleta Pueblo playwright originally from Santa Fe, New Mexico. He was a member of the Goodman Theatre Playwrights Unit and part of the 2022 Future Labs Reading. Recent regional highlights include productions of *Pueblo Revolt* (Perseverance Theatre, Santa Fe Playhouse, AlterTheater Ensemble, No Peeking Theatre), *Bingo Hall* (Native Voices at the Autry), and readings of *Pueblo Revolt* (Santa Fe Playhouse, American Stages, Oregon Shakespeare Festival), *CHICAGO: Pigeon* (AlterLab, Sundance Institute, Workshop Theatre, Yale Indigenous Performing Arts Program), *TVSHKA* (Story Theatre). Dillon was awarded Sundance Institute's Uprise Grant in 2022, Theatre Bay Area's Rella Lossy award for best new script in 2022, and Broadway World Albuquerque's Best New Play and Best Play for 2025. He has also been named an Artist in Residence at University of California, Berkeley's Art Research Center and playwright resident for AlterTheater Ensemble's AlterLab. As a cultural consultant, Dillon has worked at Steppenwolf Theatre, and Perseverance Theatre. He has also assistant directed at Moonbox Theater. Dillon has guest lectured at Northwestern University, New York University, Brown University, University of California, and Marymount Manhattan College. He currently resides in Chicago, Illinois.

# GUEST ARTISTS



**NOAH DIAZ**  
*Guest Artist*

**Noah Diaz** is a playwright and screenwriter from the Iowa/Nebraska border. His plays have been produced at Steppenwolf, Roundabout Theatre, La Jolla Playhouse, The Playwrights Realm and Baltimore Center Stage, among others. Commissions from Studio Theatre, La Jolla Playhouse, Steppenwolf, Roundabout Theatre, Manhattan Theatre Club/Sloan, Baltimore Center Stage, Audible/Amazon Studios, and Arena Stage. Noah is a recipient of the ASCAP Cole Porter Prize, a six-time recipient of playwriting awards from The Kennedy Center, and a nominee for an Outer Critics Circle Award. In television, he has written for Hulu, ABC, Peacock, 20th Television, The Walk-Up Company, Nyle DiMarco, and Eva Longoria. MFA: Yale School of Drama.



**MARTINE KEI GREEN-ROGERS**  
*Dramaturg*

**MARTINE KEI GREEN-ROGERS, she/her (Dramaturg)** is the Dean of the Theatre School at DePaul University. Her dramaturgical credits include *its not a trip, its a journey*, *He Brought Her Heart Back in a Box* and *The Ohio State Murders* at Round House Theatre; *Wind in the Door* and *Long Way Down* at the Kennedy Center; *The Catastrophist* at Marin; *Toni Stone* and *Sweat* at the Goodman; *Lion in Winter*, *King Hedley II*, *Radio Golf*, *Five Guys Named Moe*, *Blues for An Alabama Sky*, *Gem of the Ocean*, *Waiting for Godot*, *Iphigenia at Aulis*, *Seven Guitars*, *The Mountaintop*, and *Home* at Court Theatre; *It's Christmas, Carol*, *Hairspray*, *The Book of Will*, *Shakespeare in Love*, *UniSon*, *Hannah and the Dread Gazebo*, *Comedy of Errors*, *To Kill A Mockingbird*, *The African Company Presents Richard III*, *A Midsummer Night's Dream*; and *Fences* at the Oregon Shakespeare Festival. Broadway credits include *Jagged Little Pill*.

# GUEST ARTISTS



**SARAH MANTELL**  
*Guest Artist*

**Sarah Mantell** is the recipient of the 2023 Susan Smith Blackburn Prize for *In the Amazon Warehouse Parking Lot* (Playwrights Horizons). Their other plays include *Everything That Never Happened* (Baltimore Center Stage, Oregon Shakespeare Festival, Boston Court Pasadena), *The Good Guys* (Second Stage), *Tiny* (Seven Devils, GPTC, Seattle Rep), and *Fight Call* (Artists Repertory Theatre, Breaking the Binary). They have been first-runner up for the Leah Ryan Award, finalist for the Lambda Literary Award, nominated for the Pulitzer, and longlisted for the Bruntwood Prize. Sarah is a two-time MacDowell fellow and Yaddo resident. They have also received residencies at Hedgebrook, Fresh Ground Pepper, Sewanee Writers' Conference, Wildacres, and SPACE on Ryder Farm, as well as a Toulmin grant, an Edgerton Foundation grant, and a Playwrights Realm Writing Fellowship. Sarah is a resident artist at Colt Coeur. BFA Rhode Island School of Design. MFA Yale School of Drama.



**HARRISON DAVID RIVERS**  
*Guest Artist*

**Harrison David Rivers** is an award-winning playwright, librettist and television writer based in St. Paul, Minnesota. He recently made his West End debut with his play *This Bitter Earth* directed by Grammy, Emmy and three-time Tony Award winner Billy Porter. Harrison's other works include *Straddle* (Diversions), *we are continuous* (convergence-continuum, Diversions, Uptown Players, New Conservatory Theatre Center, Geva, Williamstown Theatre Festival), *The Salvagers* (Yale Rep), *the bandaged place* (Roundabout), *A Christmas Carol* (CenterREP, Geva), *Where Storms Are Born* (Williamstown), *And She Would Stand Like This* (Antipodes Theatre Company, The Movement Theatre Company), *Weathering* (Karamu House, Penumbra), *To Let Go and Fall* (Theater Latté Da), *Sweet* (Great Plains Theatre Commons, Fleetwood-Jourdain Theatre, National Black Theatre), *When Last We Flew* (Out Front Theatre Company, Real Live Arts, TheatreLAB, Diversions, NYFringe) and the musicals *Last of the Red Hot Mamas* with Sue and Lloyd Ecker (Bucks County Playhouse), *We Shall Someday* with Ted Shen (Alabama Shakespeare Festival, Theater Latté Da, Joe's Pub, Signature Theatre, The Studio Theatre Tierra Del Sol, Transport Group/Public Theatre), *The Neverglades* with Benjamin Velez and *It Comes with the Building* with Jacob Yandura and Rebekah Melocik.

# GUEST ARTISTS



**Khalid Y. Long**  
*Dramaturg*

**Khalid Y. Long, PhD**, is the Associate Dean of Research and Creative Endeavors in the Chadwick A. Boseman College of Fine Arts at Howard University, where he also serves as the Interim Chair and Associate Professor of Theatre Arts. Long's books include "Contemporary Black Theatre" and "Performance: Acts of Rebellion, Activism, and Solidarity" (Methuen Drama) and "August Wilson in Context" (Cambridge University Press). A freelance dramaturg, Long has collaborated with numerous theatres nationwide, partnering with a wide array of theatre artists.



**Kat Zukaitis**  
*Dramaturg*

**Kat Zukaitis (she/her)** is the Director of New Works at the Goodman Theatre in Chicago, where she directs the annual New Stages Festival. Previously, she was the New Play Development Manager at Victory Gardens Theater and the Literary Associate at South Coast Repertory. She trained at Steppenwolf Theatre and Actors Theatre of Louisville and holds degrees from Haverford College and Yale Divinity School. Kat is a proud Omahan who grew up dancing at the Omaha Academy of Ballet, performing at the Playhouse and the Rose, and choreographing musicals at the Chanticleer.

# GUEST ARTISTS



**BEAUFIELD BERRY**  
*Variety Show Host*

**Beaufield Berry** is a writer, producer, and cultural organizer who lives at the intersection of art, activism, and community. She is the Executive Director of the Iowa Abortion Access Fund and served as Vice President of the Omaha Entertainment & Arts Awards, where she champions artists, storytellers, and the cultural workers who keep the city vibrant. A Midwest-based playwright, novelist, and podcaster, Beaufield’s work explores Black history, joy, survival, and truth-telling through bold, often genre-bending storytelling. Her plays have been developed and performed across the country, including at the Great Plains Theatre Commons, finalist for the O’Neill, Denver Center for the Performing Arts, and BLUEBARN Theatre. She is also the founder of “Good Mom,” a lifestyle brand and media platform celebrating authenticity, humor, and community, and the co-founder of Agribella Orbis, a nonprofit dedicated to building connection through narrative. Whether on stage, on the page, or behind the scenes, Beaufield is known for creating spaces that are honest, electric, and just a little bit dangerous—in the best way.



**DENISE CHAPMAN**  
*Director, Being Black Outside*

**Denise Chapman** is an Omaha-based theatre practitioner and the Producing Artistic Director of Theatre at The Union for Contemporary Art. She holds a BA in Theatre from Creighton University and a MFA from the Theatre Conservatory at the Chicago College of Performing Arts at Roosevelt University. She was awarded the 2020 Individual Artist Fellowship Award from the Nebraska Arts Council and is an Omaha Entertainment award winning director, actor and playwright. Past directing credits include: *Spunk*, *The Blues of Knowing Why*, *Blood at the Root*, *The Divine Order of Becoming*, *Bourbon at the Border*, *Center the Margins*, *The Bubbly Black Girl Sheds Her Chameleon Skin*, *More Than Neighbors* (The Union); *Love Be Like*, *Flex* (ANPF at Theatre Squared); *Songs for a New World*, *She Kills Monsters* (The University of Nebraska Omaha); *Dragons Love Tacos*, *Giraffes Can’t Dance* (The Rose Theatre); *The Mountain Top*, *Constellations*, *Fences* (Omaha Community Playhouse); *Sweet*, *The Crowd You’re in*, *Neighborhood Tapestries*, *Voices from the Center* (Great Plains Theatre Commons); *With Love Felicia*, *Love is not Abuse* (Malcolm X Center); *House of Blue Leaves*, *Who’s Afraid of Virginia Woolf?* (Circle Theatre); *The Good Doctor*, *Electra* (Creighton University); *Sand Mountain*, *Brighton Beach Memoirs* (Midland Lutheran University); *Sweet*, *Tell Martha Not to Moan*, *Marvelous Country*, *Turpentine Jake* (Readings for GPTC); *The Nightshade Tapes*, *Hello Madness*, *If*, and *Hysterical Blindness 3* (BLUEBARN’s Witching Hour).

# GUEST ARTISTS



**ABZ CAMERON**

*NWD<sup>2</sup>A Participant*

**Abz Cameron (they/them)** is a queer, neurodivergent multidisciplinary artist from Omaha whose work moves between theatre, visual art, and community-based practice. They have appeared onstage with BLUEBARN Theatre, created design work with Shelterbelt Theatre, and previously worked with Ollie Webb Center, Inc. through the Art of Imagination program. They currently work with Opera Omaha as a Holland Community Opera Fellow, creating accessible arts programming. They're drawn to sensory, playful projects that bring people together and make space for genuine feeling and healing.



**VINECIA COLEMAN**

*Playwright, **Being Black Outside***

**Vinea Coleman** is a playwright and actor based in Minneapolis/St. Paul, whose artistic aim as a writer is to tell stories that focus on the Black female experience. She was awarded the Playwrights' Center's 2025-2027 Many Voices Fellowship and was named as a 2025 Ojai Playwright Conference finalist. Her plays have been developed at the Great Plains Theatre Commons, Boise Contemporary Theatre's BIPOC Playwright Festival, Oregon Shakespeare Festival's Black Swan Lab, Seven Devils Playwrights' Conference, and others. Her play *Christiana Lysistrata* had its 2024 premiere at Main Street Players (Miami, FL), and her play *Café Au Lait* will have its premiere at History Theatre (St Paul, MN) in 2027. As an actor, she has worked at Penumbra Theatre, Pillsbury House Theatre, Jungle Theater, Oregon Shakespeare Festival, Portland Playhouse, and more. MFA: University of Idaho.

# GUEST ARTISTS



**RAYDELL CORDELL III**  
*Young Dramatist  
Mentor Actor*

**Raydell Cordell III** is a sixth-grade teacher at Loveland Elementary, Westside Community Schools, where he established a theatre program for students in third-through-sixth grades. Some of his recent and favorite roles include Falstaff and Duke Orsino in *Henry IV, Part 1* and *Twelfth Night* (in rep) at Old School Shakespeare Omaha. Other favorite shows include *Primary Trust*, *A Very Die Hard Christmas*, *The Legend of Sleepy Hollow*, *Red Summer*, and *The Christians* (TAG Award Best Supporting Actor) at BLUEBARN Theatre; *The Diary of Anne Frank* at the Rose Theater, *Stupid F'in Bird* and *To Kill a Mockingbird* (OEA Award for Best Supporting Actor in both productions) at the Omaha Community Playhouse. Raydell had the privilege to travel to the United Kingdom and participate in workshops with the Royal Shakespeare Company. Raydell has a Bachelor's in Theatre from the University of Nebraska at Omaha and a Master's in Elementary Education from the College of Saint Mary. He would like to thank everyone who has supported him: family, friends, and the theatre community here in Omaha!



**LUIS GARCIA**  
*Projection Design,  
Being Black Outside*

**Luis Garcia (he/él)** is a Peruvian-American lighting and media designer based in the DMV, specializing in theatre, dance, installations, and live performance. He holds an MFA from the University of Maryland, College Park (2024) and a BA in Theatre Arts from Stetson University (2016). A 2018 Live Design "30 Under 30" honoree, Luis is passionate about fostering authenticity and diversity in the arts while mentoring emerging BIPOC artists. He is a recipient of the 1/52 Project grant, an alumnus of the OSF F.A.I.R. Program and was part of the 2024 GPTC Design Wing cohort. This year, Luis received Helen Hayes Award nominations for Outstanding Video Design for *Professor Woland's Black Magic Rock Show* (Spooky Action Theatre) and *Furlough's Paradise* (Theatre Alliance). Recent credits include *Macbeth* (University of Maryland), *Tambo & Bones* (Spooky Action Theatre), *Dead Inside* (Woolly Mammoth Theatre Company) and *Wipeout* (Studio Theatre).  
Instagram: @Luis.Garcia.Design

# GUEST ARTISTS

48



**MEILANI HUGHES**  
Little Girl  
*Being Black Outside*

Meet **Meilani Hughes**, who was born in Savannah, Georgia. She has a love for performing and being on stage. Most recently, Meilani played the role of Nemo in *Finding Nemo Kids* at her school, Nelson Mandela Elementary. Meilani has worked with Omaha Community Playhouse, where she returned for her second appearance in *A Christmas Carol* this past year. She has also performed in Disney's *Finding Nemo Jr.* at the Omaha Community Playhouse and *Aladdin Jr.* at Nelson Mandela Elementary, where she played Skeleton Sahara. When she's not performing, Meilani enjoys swimming, playing basketball, and practicing gymnastics.



**KARMA LILOLA**  
NWD<sup>2</sup>A Participant

**Karma LiLoLa (she/her)** is an MTF Trans Woman High Level Quadriplegic / C4 Incomplete SCI. She is a First Generation Mexican-American from South Omaha and attended Omaha South Performing Arts Magnet. Studies include Yale University, BA Theatre Studies, Dance Composition and Queer Avant-garde Nightlife; MA in Theatre, Dramaturgy - Queer, Gender, and Performance Studies in Elizabethan Theater, from UNO. Her article "Contemporary Ethnographic Performance Methodologies" was published in Howlround in 2017. Site specific theater, lip sync artistry, wheelchair choreography, and the verbatim theater process drive her work. Production credits include: Queerniverse Burlesque; Omaha Fashion Week; Omaha Fringe Festival; Anastasis Theater Company; Common Senses Festival; and the United Spinal Association of Nebraska.

# GUEST ARTISTS



**ASIA NARED**

Niecy

*Being Black Outside*

This is **Asia Nared's** first production acting at the Shirley Tyree Theatre. She is also a director, designer, stage manager, and producer. Asia's recent technical works include director and lighting designer for VIA's *Charm*; and lighting designer for *Shelterskelter* and co-producer for *One More River to Cross*, both at Shelterbelt. Asia has worked with Shelterbelt Theatre, The Rose Theatre, University of Nebraska at Omaha, Benson Theatre, Great Plains Theatre Commons, the Circle Theatre, the Union for Contemporary Art, and Voices in Alliance.



**ROZ PARR**

The Neighbor

*Being Black Outside*

**Roz Parr** is thrilled to be a part of *Being Black Outside*. Some of her recent credits include: Kit in the premiere of *The Great Race* (The Rose), Mitzy in the premiere of *Frozen Charlottes* (Great Plains Theater Commons), Florina in *Dragons Love Tacos* (The Rose), Coral/Bloat in *Finding Nemo* (The Rose) Mom in *Diary of a Wimpy Kid* (The Rose), Actor 3 in *Baskerville* (Omaha Community Playhouse) and Jen in *The Cake* (OCP).

# GUEST ARTISTS



**MADISON ROMAN**  
Young Dramatists Director

**Madison Roman** is delighted to be making her GPTC directorial debut with the Young Dramatists. Madison is an award winning actor, director, and choreographer! Madison believes deeply that every arts endeavor should be rooted in respect and dignity. Her regional acting credits include: *Cabaret* (Sally), *Urinetown* (Hope), *Footloose* (Urleen), and *Shrek The Musical* (Gingy). Choreography credits include: *Waitress* (Omaha Community Playhouse), *42nd Street* (Elkhorn North), *Legally Blonde* (Elkhorn North) and more. This summer you can find Madison doing Intimacy Coordination and Fight Choreography for Papillion Lavista Sumter Theatre and Elkhorn Community Theatre. Thank you to the Lord, my family, Ellen, and the students for this incredible experience.



**JUNE RAVEN ROMERO**  
*Guest Actor*

**June Raven Romero** is an actor, performing artist, writer, healthcare worker and transgender community advocate born and raised in Miami, FL. An unwitting first generation citizen of the U.S., she is of Cuban and Nicaraguan descent. Her works and passions span a wide range of skills and fields that often combine classical, musical, experimental, immersive, dance and site-specific theater elements with components of film. June is represented by BMG models and talent.

# GUEST ARTISTS



**SKYLER SEILER**  
*Guest Actor*

**Skyler Seiler** is a trans Afro-Puerto Rican performer based in the Twin Cities of Minnesota. A triple threat since she was as young as she can remember, Skyler brings fierce energy, heart, and authenticity to the stage. She is absolutely invigorated and grateful to be part of this process, and is looking forward to playing a woman in such a prime and transitional point in her self discovery, and hopes you enjoy her perspective. Skyler consistently uses her platform to uplift marginalized voices and actively engages in political advocacy around issues affecting minorities in America. Her artistry blends performance with purpose, creating space for representation, celebration, and resistance.



**TAMMYRA'**  
Vee  
*Being Black Outside*

**TammyRa'** is pleased to return to the Union. She is an award-winning storyteller, actress, director, master hair stylist, vocalist, and entrepreneur based in Omaha, Nebraska. TammyRa' has performed at numerous theaters throughout Omaha and Lincoln, including Center Stage, the John Beasley Theater, Omaha Community Playhouse, Lincoln Community Playhouse, University of Nebraska-Omaha, Nebraska Shakespeare, the Union for Contemporary Art, and the Rose Theater. Her performance credits include short films, local and regional commercials, and radio and television voice-overs. During the pandemic, she also began producing virtual programming. TammyRa' has received several honors for her work, including the Clarence Teal Award, the Fonda McGuire Award (twice), and the TAG Award. As a director, she has led productions and readings at the Union for Contemporary Art, Great Plains Theatre Commons (GPTC), Omaha Community Playhouse, Shelterbelt, Joslyn Castle and the Rose Theater.

# GUEST ARTISTS



**Steven L. Williams** is a freelance scenic, lighting, and graphic designer whose work spans more than 150 productions with companies including the Lake Tahoe Shakespeare Festival, Nebraska Shakespeare Festival, Omaha Community Playhouse, The Rose Theater, Theatre Aspen, Heritage Repertory Theatre, Indiana University, Brown County Playhouse, and McLeod Summer Playhouse. Since 1998, he has designed scenery for Thorn Productions, producers of *The Thorn*, one of the nation's largest touring faith-based productions. Most recently, Steven served as Production Designer and Theatre Consultant for the filmed version of *The Thorn*, which is reached global distribution. He is currently designing a new national tour, *The Arrival*. Steven's work has been recognized by the Omaha Theatre Arts Guild and the Omaha Entertainment Awards. Among his most meaningful projects was the design of a police investigation and training facility for Project Harmony in Omaha. He is currently in his 31<sup>st</sup> year at the University of Nebraska at Omaha, where he serves as Professor of Theatrical Design.

**STEVEN L. WILLIAMS**  
*McDowell Award Recipient*



**Basil Woodson** is a recent graduate of Omaha Northwest High-school and an aspiring writer and artist. They started theater in high school and grew to love storytelling and theater. They wrote and directed *The Last Meeting* with the goal of impacting others and expressing their feelings through writing. This play was showcased in the OPS one act festival and was the first experience of finishing a story and showcasing it to others. With a goal to continue sharing stories in different mediums, *The Last Meeting* is a start to many stories to come.

**BASIL WOODSON**  
Young Dramatists Playwright



# GUEST PANELISTS



**NAN BARNETT**  
*Panelist*

**Nan Barnett** (she/her) is a new play developer and producer and an advocate for theater-makers and the theater they make. While on NNPN's Executive Committee, she worked to create the organization's revolutionary Rolling World Premiere and Residency programs. After joining NNPN full-time in 2013, she guided it through the development and launch of its field-altering New Play Exchange and the planning process, which resulted in the organization's much-lauded new governance and membership structure designed to lead the field towards a truly diverse, equitable, and inclusive new play ecosystem. Nan spent 24 seasons at Florida Stage, a LORT theater producing exclusively new and developing work, and was Coordinating Producer for the 2015 and 2018 iterations of DC's Women's Voices Theater Festival.



**CHRISTOPHER R. BINEHAM**  
*Panelist*

**Christopher R. Bineham**, Playwrights' Center's Director of Advancement, is a development and communications professional who has worked primarily with nonprofit organizations. He has held professional positions in the development department of The Saint Paul Chamber Orchestra and in program management for HOURCAR, the carsharing program based in Saint Paul, Minn. Past freelance clients include The Saint Paul Chamber Orchestra, Saint Paul Conservatory of Music, and Playwrights' Center. His volunteer service has focused on arts organizations including Playwrights' Center, The Brick Theater (Brooklyn, NY), Minnesota Fringe Festival, Metropolitan Regional Arts Council (Saint Paul, Minn.), and The Saint Paul Chamber Orchestra. He was educated at St. John's College (Santa Fe, New Mexico).

# DESIGN WING



The Great Plains Theatre Commons Design Wing expands the conceptual boundaries and experiential reference for a new generation of designers in the performing arts. Emerging designers embark on an exploration of process and are deeply immersed with the artists and activities at the GPTC. The designers move between the GPTC events, workshops and a design lab, with emphasis on the latest developments in the design process for the performing arts and integration with the national playwrights at the festival. The designers will have a chance to expand their purview with these top national artists with the goal of strengthening the cultural fabric of the performing arts both locally and nationally. The work of the Design Wing will correspond with a larger collaborative effort by the GPTC to explore new possibilities for how creativity becomes manifest in our communities.



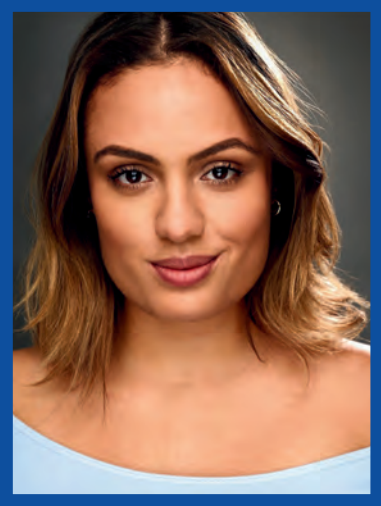
**EZEKIEL CLARE**  
*Design Wing*

**Ezekiel Clare** is an artist born and raised in New York City holding a BFA in Film from SUNY Purchase and is currently pursuing a MFA in set design from NYU. Set Design credits include: *Sweet Blood* (2025), *Can't Make an Omelette* (2025), *Fugue/State* (2025), *SheNYC* (2024), *Ghetto Alchemy: A Lunchroom Survival Guide* (2024), *Powerline Road* (2023) The Fire This Time Festival (2023), *Marisol* (2022), and *How I Learned To Drive* (2021). Special thanks to infinite and all it inhabits. [justeclare.com](http://justeclare.com)"



**ARI CLEVELAND**  
*Design Wing*

**Ari Cleveland** is a multi-media artist specializing in sound design, AV production, and direction for theater, comedy, podcasts, installations, and special events. They are drawn to works that amplify and celebrate the off-beat and unconventional. Recent projects include; *On Tuesday We Fight* (Soho Playhouse), *The 24 Hour Musicals* (Irondale Space), *Needle & Bone* (The Flea), *This is Not a Death Cult* (The Flea), "The Unobstructed Review" (podcast). Ari graduated with a BA from Brown University and was a part of the 24 Hour Plays: Nationals 2025 Cohort (sound designer). [linktr.ee/ari.chillicothe](https://linktr.ee/ari.chillicothe)



**ORIANA SOPHIA**  
*Design Wing*

**Oriana Sophia** is a costume designer and actress. She was raised between the Dominican Republic and NYC and continues to split her time between both places. Her credits include *La Llamada* (Repertorio Español) *El Deseo del Astronauta* (Pregones PRTT) *Water by the Spoonful* (Colorado Springs FAC), *In The Heights* (Colorado Springs FAC). Oriana's practice is centered on the rhythm of stories—finding the pulse within a narrative and translating it into a visual language. She is committed to decolonizing stories through design, intentionally breaking away from traditional Western lenses to find more authentic, inclusive ways of representing identity on stage and screen. She is a resident Designer and Actress at Boundless Theater. MFA NYU/TISCH, BA Hunter College. [orianasophia.com](http://orianasophia.com)



**YIYUAN LI**  
*Design Wing*

**Yiyuan Li** is a Chinese lighting designer currently based in New York City. Selected Credits: *Blue Window* (USC School of Dramatic Arts); *The Master And Margarita* (Colgate University); *The Last Days Of Judas Iscariot* (NJIT); *Deep Blue Sound* (USC School of Dramatic Arts); *Garside's Career* (Mint Theatre Company); *Cymbeline* (NAATCO, Classic Stage Company); *The Heart Sellers* (Cape Rep Theatre); *Richard II* (Mark O'Donnell Theatre); *Red Maple* (Curtain Call Theatre); *Love's Labour's Lost* (Carroll Park); *The Moors* (NYU, Theatre C); *Dancing at Lughnasa* (Lenfest Center for the Arts); *Story of A Bird* (Shanghai Changjiang Black Box Theatre); Second Av Dance Company resident lighting designer (2022-2023). Education: MFA, Design for Stage and Film, NYU Tisch. Outside of design, she enjoys walking on the street with her camera to observe and capture stories.

# DESIGN WING



**RAPHAEL MISHLER**  
Design Wing Mentor

**Raphael Mishler** creates visual work for live performance. Scenery includes *Titans* (Clubbed Thumb) *GodBird* (Exponential), and *her Children* (Soho Playhouse), *fuzzy* (Barrington), *The Weasel Festival* (BAM), *The Stand In* (Fiasco), *Bunny Bunny* (Invisible Dog), *Solo Voyages* (Whitney) and *The Fires* (Soho Rep, Henry Hewes nom.) As associate, *Eugene Onegin* (Theatre Squared, upcoming) *Ceillidh* (Baltimore), *Is It Thursday Yet* (LJP), *Urinetown* (Encores!), and the international tour of *24 Decade History of Popular Music* (Pomegranate Arts). Puppets include *We Live in Cairo* (NYTW), *June Rites!* (Waterwell), *The Amateurs* (Vineyard), *Collective Rage...*(MCC), *Tumacho* (Clubbed Thumb, Drama Desk). Additional large-scale outdoor work with organizations including JFREJ, Great Small Works, Mijente, Fight For 15!, SEIU, About Face, and the People's Puppets of OWS. Raphael previously worked as a props designer for new plays. Highlights include the world premieres of *What the Constitution Means to Me* (Broadway), *Plano* (Clubbed Thumb), *Pipeline* (Lincoln Center Theater), *The Box* (The Foundry) and *Men on Boats* (Playwrights Horizons/Clubbed Thumb) He is an Associate Artist with Clubbed Thumb, proud member of USA829, and a founding member of Building Stories LLC.





# DIRECTORS



**ADAM BASSING**  
*Escape Velocity*

**Adam Bassing** is thrilled to be back at the New Play Festival. He recently served as assistant director for *The Heartsellers* (BLUEBARN) and *Titanic: The Musical* (Omaha Community Playhouse). On stage, he's appeared in *Dot* (Omaha Community Playhouse), *The Great Leap* and *The Emperor and the Fool* (BLUEBARN), *Eurydice* (Creighton University), and *God on Trial* (Brigit Saint Brigit).



**BREANNA CARODINE**  
*The Rink at the End of the World*

**Breanna Carodine** studied Theatre at Doane University and she is an Omaha based director and actor. She made her directorial debut in 2018 with a staged reading of *Lasso of Truth* before service as an assistant director for *Shrek The Musical* (Omaha Community Playhouse). Her most recent directing credits include *The Vagina Monologues* (Snap Productions); *Every Living Thing* (Great Plains Theatre Commons); *Kings, Queens and Unruly Peasants* (NOW Lab); *Pipeline* (OCP); *Pretty Fire* (OCP); *Black Women Rebel* (Radio Theatre Omaha); and *What A Time To Be Alive* (GPTC). She was also the Associate Director for *Waitress* (OCP), the Assistant Director for *The Color Purple* (OCP), and *The Rocky Horror Show* (OCP). Some of her most recent moments on stage include playing Chris in *POTUS: Or, Behind Every Great Dumbass are Seven Women Trying To Keep Him Alive* (BLUEBARN Theatre) and Bradley in *Men on Boats* (OCP.) In her spare time she enjoys making commentary on Bravo TV and raving about local restaurants on her instagram @eatlocalomaha.

# DIRECTORS



**ANNA DRAGON**

*Beautiful Blessed Child*

**Anna Dragon (Co-Director)** is a local performer and up-and-coming director in the Omaha Metro area but her roots begin in the East Coast. She lived in southern Maryland for most of her life but developed her love for acting and directing in northern Florida. She acted in college productions of *A Christmas Carol*, *The Comedy of Errors*, and *Pygmalion*. Additionally she directed a full production of *Our Miss Brooks*. In Omaha, she has assistant directed for *Rent*, *Dear Jack*, *Dear Louise*, and *The Drawer Boy* at the Omaha Community Playhouse. She has also performed as the Angel in *Angels in America Parts 1 & 2* at the Omaha Community Playhouse. Additionally, she has performed in SNAP Productions' *Five Lesbians Eating a Quiche* and most recently *The Vagina Monologues*. She is happy to present her Omaha directing debut at GPTC where she has performed twice before. May the world heal through art!



**CARINA DUMARCE**

*TRANSITION*

*(or The Electrolysis Play)*

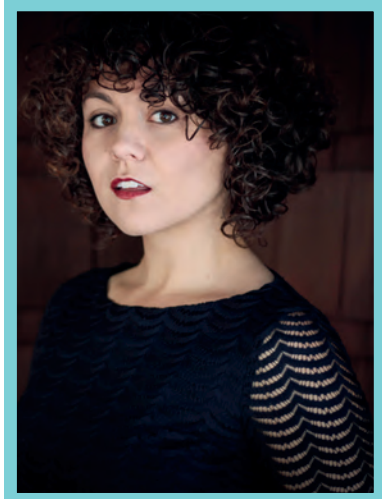
**Carina DuMarce (they-them)** A member of the Sisseton Wahpeton Oyate, Carina is an Indigiqueer storyteller & educator currently based in Omaha, NE. Carina rolled into Omaha for a Fellowship position at the Rose Theater in 2018 and continued their work creating with young people and their families as the Rose Theater's Associate Director of Outreach and company actor. As a director and playwright, Carina's work has been seen in Fargo, ND; Sisseton, SD; and Omaha, NE. At the root of their practices and storytelling are the pillars of art, climate justice, queer representation, and cultural activism. On stage, Carina has had the opportunity to bring characters to life at The Rose Theater in world premieres of *Giraffes Can't Dance* (Gerald) and *The Little Engine That Could* (Piper). More favorites of theirs include a retelling of Shakespeare's *A Midsummer Night's Dream*, titled *Darkness Like a Dream* (Hermia), *Peter and the Starcatcher* (Smee), *By a Thread* (Falon Enapay) and *Red Riding Hood* (Delivery Person). Carina was most recently seen as 'Greta' in Anastasis Theater Co. and Great Plains Theatre Commons collaboration of *Ways to Win the Woods* by Ellen Struve. Carina's dream for the future is to continue to make space for Indigenous voices to share their stories in immersive, community centered settings – breaking down the theatrical colonial mindset one straw at a time. They create for the world that they may not see yet, but know that world will outlive them. Pidamaye.

# DIRECTORS



**DARLYN GONZALEZ**  
*Untitled Superhero Play*

**Darlyn Gonzalez** is an Omaha-based actor and director with a Theatre degree from the University of Nebraska at Omaha. Her recent productions include *The River Bride* (Assistant Director), *American Mariachi* (Assistant Director), *You'll Be Made of Ashes Too* (Director), *Hairy Girls Face the End of the World* (Director), and *The Thanksgiving Play* (Assistant Director). Darlyn's focus is on continuing to share Latinx stories on stage in the Omaha Community. She appreciates the Great Plains Theatre Commons for giving her the opportunity to direct one of the staged readings this year. GPTC has been an integral part of her acting and directing journey.



**JACKIE KAPPES**  
*Beautiful Blessed Child*

**Jackie Kappes (Co-Director)** has had the privilege of working as a theatre artist and teacher with vibrant communities across the globe, including Shanghai Children's Art Theater, 7 Stages International Theatre, San Francisco Playback Theatre, Disney Musicals in Schools, StageWrite, Seattle Children's Theatre, Lexington Children's Theatre, Bay Area Children's Theater, and Chattanooga Theatre Centre. She currently serves as the Education Director and a Company Artist for The Rose Theater. She received her Master's in Counseling Psychology and Drama Therapy at the California Institute of Integral Studies and was part of the 2024-2026 Commoners' Cohort with Great Plains Theatre Commons. She has utilized theatre to facilitate dialogue for communities and organizations around topics such as harassment, immigration, veterans' issues, LGBTQ+ pride, and more. Jackie also brought drama therapy practices into schools to support students and families in building confidence, working through trauma and grief, fostering more positive relationships, and preparing for big life transitions.

# DIRECTORS



**COLT NEIDHARDT**  
*Headless Nebraska*

**Colt Neidhardt** refuses to specialize. A Nebraska native, he is a theatre artist and nonprofit consultant with over 15 years of experience supporting organizations that develop stories and strengthen communities. His work in theatre has been seen across the country as an actor, director, occasional stage manager, and frequent collaborator in the development of new work. Outside of theatre, Colt is passionate about food systems and can often be found gardening and cooking. He is currently baking his way through “The Book on Pie” by Erin Jeanne McDowell. Colt holds an MA in Theatre from the University of Nebraska–Omaha and an MFA in Acting from Louisiana State University. IG: @coltneidhardt



**ZOELLA SNEED**  
*The Scouts of America*  
*Don't Sell Cookies, B\*tch*

**Zoella Sneed** (she/her) is an actor, director, and arts leader based in Omaha, Nebraska. She has performed with several theaters in the area such as The BLUEBARN (*Macbeth* - Weird Sister), The Shelterbelt Theatre (*LIZZIE* - Alice), The Rose Theater (*Cinderella* - Ella), The Shirley Tyree Theater, Great Plains Theatre Commons, and more. When she's not onstage, she's advocating for the impact of the arts in our community and across the state. “Good theatre got soul!” - Dr. Cristal Chanelle Truscott

# DIRECTORS



**KATHY TYREE**  
*This is How You  
Capture the Light*

**Kathy Tyree** is an Omaha native with an extensive background as an actor, singer, and director. Kathy's most recent directing credits include *Milo Imagines the World*, *A Christmas Story*, *Three Little Birds*, *Respect*, *Tell Martha Not to Moan*, *Holiday Extravaganza* and *Primary Trust*. She has received multiple acting and directing awards. Recent recognition includes Best Director for *Dream Girls*, *American Son*, *The Color Purple*, *Ain't Misbehavin'* and Best Actor for *Sweat*. In 2023, Kathy expanded her artist career into regional theater performing the role of Baneatta in *Chicken & Biscuits* and as Lena Younger in *A Raisin in The Sun* at Theater Squared in Fayetteville Arkansas. She is an Associate Member of the Stage, Directors, and Choreographers Union and in 2024 became a member of Actor's Equity Association. She is the owner of Kathy Tyree Productions and serves as a member of the Great Plains Theatre Commons Board of Directors and as the Strategy & Compliance Director for the Rose Theater. Kathy is honored to be directing in the Festival this year and to work with such wonderful artists to bring Kandace James beautiful story *This is How You Capture The Light* to life.



**WAI YIM**  
*Bone by Bone*

**Wai Yim** is an actor, director, choreographer, playwright, and the Managing Director of Token Theatre in Chicago. Theatre credits: *Our Town* (Cleveland Playhouse), *The Notebooks of Leonardo da Vinci* by Mary Zimmerman (Goodman Theatre, Old Globe, Shakespeare Theatre Company), *A Christmas Carol*, *The King of Hell's Palace*, *Postnation*, *King of the Yeas* (Goodman Theatre), *Chimerica* (TimeLine Theatre), *The White Snake* by Mary Zimmerman (Goodman Theatre, Old Globe, McCarter Theatre, Wuzhen Theatre Festival in China), *The Oldest Boy* (Unicorn Theatre), *Nomad Motel* (Horizon Theatre Company), *ZAC EFRON* (Token Theatre). Film: *North of the 10* and *Fatal Influence: Like, Follow, Survive*. TV: *Work in Progress*, *The Chi*, *Power Book IV: Force*, *neXt*, *Chicago PD*, and *Patriot*. Wai's semi-autobiographical play, *The Emperor and The Fool*, was workshopped at BLUEBARN Theatre and won OEAA's Outstanding New Script. His other play, *The Great Race*, premiered at The Rose this April. He won OEAA's Outstanding Director for *The Chinese Lady*, *The Great Leap*, and *The Wild Party* (all at BLUEBARN). Wai has participated in GPTC as an actor and director since the first Conference. [www.whyyim.com](http://www.whyyim.com)

# DIRECTORS



**MACKENZIE ZIELKE**  
*Disillusioned*

**Mackenzie Zielke** received her MA in Theatre from Regent University and a BA in Music Theatre from the Conservatory at UMKC. While living in Kansas City she worked with the Lyric Opera, Barn Players, bar Natasha, Chestnut Theatre, Musical Theatre Heritage and Padgett Productions in various capacities. For nine years she was the director of the musical theatre program at Grace University where she taught classes and voice lessons, directed productions, and created and directed cabaret showcases. Since moving back to Omaha full time, she has been a vocal teacher at SNJ Studios, a stage director for the Omaha Symphonic Chorus, and currently teaches both voice and music theatre at UNO. You might also find her singing with Omaha's Broadway Bar or the local cover band Velvet Crush. She most recently directed *My Mother's Lesbian Jewish Wiccan Wedding* at the Shelterbelt but has also directed shows at Omaha Community Playhouse, Bellevue Little Theater and the Chanticleer. Mackenzie has appeared onstage in local productions of *Murder Ballad*, *Shrek the Musical*, *Bridges of Madison County*, *Hello Dolly* and *Heathers* (among others) and recently won the OEAA for her portrayal of Judy Garland in *End of the Rainbow* at PART. All love goes to her two boys, Remy and Lincoln, for always being her biggest supporters.







# GPTC BOARD

**Diane Watson, President:** Diane is the Director of Advisor Engagement and Sales Support for Transamerica. She is an actor, improv artist, and serves on the Board of Trustees of Saybrook University. She is also the host of KVNO's food program, Dish Omaha, and of the YouTube food sustainability show, Leftover Chef.

**Nina Washington, Vice President:** Nina is a performer, youth educator, choreographer, and events professional. She has appeared with numerous Omaha theatre companies and has a diverse background in compliance, mediation, project management, and event coordination.

**Cecilia Poon, Secretary:** Cecilia is a psychologist and adjunct assistant professor in Psychiatry at Nebraska Medicine/UNMC. As a geropsychologist and theatre artist, Cecilia seeks to connect people of all ages, abilities, cultures, and experiences through creative arts.

**Diane Coffin, Treasurer:** A lover of theatre, music and the arts, Diane Coffin serves as executive assistant to the Omaha Symphony's President & CEO, a position she has held for more than thirty years, assisting seven CEOs and the organization's board of directors.

**Raydell Cordell III** is a 6th Grade Teacher at Loveland Elementary and an Actor/ Teaching Artist. A product of Omaha Public Schools and The Rose Theater, Raydell is a passionate individual who believes in the human connection and the power of impact and growth in individuals.

**Kay Friesen** has had a connection with GPTC from its inception at Metropolitan Community College (MCC) where it was known as the Great Plains Theatre Conference. Her MCC career spanned over 40 years, where she served in a variety of capacities. She retired in 2025 as the VP of Operations. Friesen holds a master's degree in Higher Education Administration with an emphasis in Human Resource Development from the University of Nebraska-Lincoln.

**Juan Padilla** is the Director of Lending with Lending Link. Born in Guatemala City, he moved to Omaha as a young child and has lived in Omaha since. Juan is a firm believer that having a thriving community is the result of a safe neighborhood, higher education, a healthy lifestyle, and providing community members with the opportunity to thrive.

**Marina Rosado** is the Executive Director for Generation Diamond, a nonprofit that provides day services to individuals who are homeless, near homeless, or re-entering the community. She has over 20 years of experience as a professional bilingual journalist and also performs as an actress in original plays based on the experiences of migrants in the United States and in stories that promote Mexican cultural traditions.

## **Kathy Tyree**

Kathy is a multidisciplinary theater professional. She works locally and regionally as an actor, singer, and director receiving numerous awards and recognition. At the Rose Theater she serves in the capacity of Director of Strategy & Compliance and collaborates with several arts organizations throughout the city. She is a member of the Actors Equity Association and Associate Member of Stage Directors and Choreographers Society.

**Hugo Alberto Zamorano** is a multidisciplinary artist focusing on murals. Born in Los Angeles, he discovered Graffiti Writing and Hip Hop. In 2006, he moved to South Omaha and joined Pop's Boxing Club. After graduating from the University of Nebraska at Omaha with a BFA in Studio Art, he helped to found the art biennial ArteLatinX, contributed to community-oriented murals, and became an art mentor at the Joslyn's Kent Bellows Mentoring Program. In 2019, Hugo began working in theatre and set design. Recently, he has traveled to and from Mexico painting art on walls and bringing original artworks from other artists to curate shows. He is on the board of Great Plains Theatre Commons, the Hip Hop Lab advisory board, works with Omaha Sister Cities Association, and is a teaching artist with multiple non-profits.

**Ronald J. Zank, PhD** is a director, playwright, dramaturg, theatre historian, and Assistant Professor of Theatre, School of the Arts University of Nebraska at Omaha at the University of Nebraska at Omaha.

---

## **Emiliano Lerda, Community Advisor**

Co-Founder and CEO of Elevator, a co-warehousing company  
Formerly Vice President, Paul G. Smith LLC

## **Maggie Rossiter, Legal Counsel**

Attorney McGrath North



**QUINN METAL CORBIN**  
*GPTC Managing Director*



**RACHEL HAUBEN COMBS**  
*GPTC Development Director*



**TAMMYRA'**  
*GPTC Community Connector*



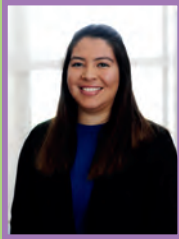
**KEVIN LAWLER**  
*GPTC Artistic Director*



**ASIA NARED**  
*GPTC Intern*



**ELLEN STRUVE**  
*GPTC Community Connector*



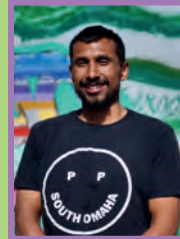
**ALYSSA GONZALEZ**  
*Festival Assistant*



**TOM GRADY**  
*Festival Photographer*



**KATHY TYREE**  
*Closing Celebration Coordinator/  
Board Member*



**HUGO ZAMORANO**  
*T-Shirt Art/  
Board Member*



**RON ZANK**  
*Hotel Concierge/  
Board Member*



**AARON ZAVITZ**  
*Festival Videographer*



**VERLA COLLIER**  
*Room Host*



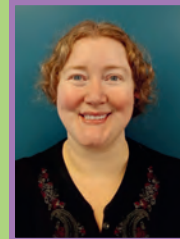
**NESSIE MASS**  
*Room Host*



**EVA QUAM**  
*Room Host*



**STEVE KNOX**  
*Front of House*



**CLAIRE SECRETT**  
*Support Staff*



**D. KEVIN WILLIAMS**  
*Support Staff*



**SCOTT WORKING**  
*Support Staff*



**ABBY SOKOL**  
*Live Streaming*



**MICHAEL RIEGER-HYDAR**  
*Live Streaming*



**DARECH GASKILL**  
*Closing Celebration Design*



**PEARL LOVEJOY BOYD**  
*Hospitality*



**DELANEY JACKSON**  
*PlayLab Coordinator*



**DELANEY DAVIS**  
*PlayLab Assistant*



**KATIE MARTIKAINEN**  
*Registration*

# COMMONS AND FESTIVAL STAFF

62

## COMMONS STAFF

**Kevin Lawler**  
Artistic Director

**Quinn Metal Corbin**  
Managing Director

**Rachel Hauben Combs**  
Development Director

**Ellen Struve**  
Community Connector

**TammyRa'**  
Community Connector

**Asia Nared**  
Intern

**Bland & Associates**  
Accountant

**COMMONERS COHORT**  
Ben Beck  
Jackie Kappes  
Allana G. Pommier

## ADDITIONAL THANKS

Marie H el ene Andr e  
Kim Cornett  
Mar a-Cristina Fust e  
Dan Koziol  
John Leclerc  
Justin Townsend  
D. Kevin Williams  
Hugo Zamorano

## FESTIVAL STAFF

**VIDEOGRAPHER**  
Aaron Zavitz/ThinkMOTION

**PHOTOGRAPHER**  
Thomas Grady

**PROGRAM DESIGN**  
Quinn Metal Corbin (@qmetal)

**CLOSING CELEBRATION DIRECTOR**  
Kathy Tyree

**FESTIVAL ASSISTANT**  
Alyssa Gonzalez

**PLAYLAB COORDINATOR**  
Delaney Jackson

**PLAYLAB ASSISTANT**  
Delaney Davis

**LIVESTREAM**  
Abby Sokol  
Michael Rieger-Hydar

**REGISTRATION**  
Steve Knox  
Katie Martikainen

**ROOM HOSTS**  
Verla Collier  
Nessie Mass  
Eva Quam

**HOSPITALITY**  
Pearl Lovejoy Boyd

**CLOSING CELEBRATION DESIGN**  
Darech Gaskill

**HOTEL CONCIERGE**  
Ron Zank

## SCRIPT READERS

Nayna Agrawal  
Benjamin Benne  
Eliza Bent  
Sarah Cho  
Adrienne Dawes  
Mashuq Mushtaq Deen  
Maddie Easley  
Thomas Gjere  
Franky Gonzalez  
Darlyn Gonzalez  
Raine Grayson  
Elizabeth Heffron  
Heather Helinsky  
DJ Hills  
Jax Jackson  
Bindi Kang  
Shayne Kennedy  
Jenny Morris Krick  
Christian Levatino  
Chris Leyva  
Prentiss Matthews  
Paloma Monfiletto  
Mia Morris  
Asia Nared  
Cold Neidhardt  
Colleen O'Doherty  
Erica Phoebus  
Allana G. Pommier  
Eva Quam  
Kira Rockwell  
Sevan  
Nathan Baron Silvern  
Katie Walenta  
Jennie Webb  
Drew Woodson  
Casey Wright  
Ron Zank

## FINAL PLAY SELECTION PANEL

Martine Kei Green-Rogers  
Alex Vermillion  
Samuel Yates

## MCC STAFF

Linda Austin  
David Bell  
Cathy Brown  
John Denne  
Noah Meloccaro  
Sarah Navratil  
Brian O'Malley  
Tiffany Perkins  
Derek Peterson  
Claire Secrett  
George Vana  
Scott Working  
Eric Yarwood  
Julie Zuck  
Culinary Team:  
Danny Flores  
Casey Craven  
James Davis  
Alayna Landis  
Una Lee  
Andrew Ott  
Kevin Ingram  
Taylor King  
Mia Hustedt  
Junior Teran  
Brenda Ruiz  
Kate Tyler  
Kyah Balabban  
Adam Arellano  
Alex Hannappel

# THANK YOU TO OUR SUPPORTERS

63

THANK YOU TO ALL OF OUR SUPPORTERS FOR THE 2025-2026 SEASON

Below we recognize contributions from July 1, 2025, through April 30, 2026.

If you see any errors or omissions, please contact Rachel Hauben Combs at rhaubencombs@gptcplays.com.

We appreciate your generosity!

## PRODUCER'S CIRCLE (\$50,000+)

Anonymous (1)  
Holland Foundation  
Todd and Betiana Simon  
Annette and Paul Smith  
The Weitz Family Foundation

## INSTITUTIONAL FUNDING PARTNERS

### GOLDENROD (\$25,000-\$49,999)

Douglas County Visitors Improvement Fund  
Lozier Foundation  
National Endowment for the Arts  
Nebraska Arts Council  
Nebraska Cultural Endowment  
The Sherwood Foundation

### COMPASS (\$10,000+ - \$24,999)

Americans for the Arts  
Edward and Sally Malashock Foundation  
Jetton Charitable Fund  
Mammel Family Foundation  
Shubert Foundation

### BLUE ASTER (\$5,000 - \$9,999)

Humanities Nebraska  
Mutual of Omaha Foundation

### PRIMROSE (\$2,500 - \$4,999)

Bland Cares  
Omaha Community Foundation Neighborhood Grants  
Transamerica Foundation

### CONEFLOWER (\$1,000 - \$2,499)

University of Nebraska Medical Center

## 2026 HOTEL PARTNER

Home2 Suites by Hilton

## PATHFINDER PARTNERS

GPTC's Partnership Circle for donors who pledge an annual gift of \$2,500-\$4,999

Bland Cares  
William and Sandi Bruns  
Amy Haddad and Steve Martin  
Cecilia Poon\* and Georg Getty

The Nebraska Arts Council, a state agency, provides funding to GPTC through its matching grants program funded by the Nebraska Legislature, the National Endowment for the Arts and the Nebraska Cultural Endowment. Visit [www.artsCouncil.nebraska.gov](http://www.artsCouncil.nebraska.gov) for information on how the Nebraska Arts Council can assist your organization, or how you can support the Nebraska Cultural Endowment.

\* indicates a member of the GPTC Board of Directors

## INDIVIDUAL DONORS

### COMPASS (\$10,000-\$24,999)

Anonymous (1)  
Katie Weitz  
Roger and Kate Weitz

### PRIMROSE (\$2,500 - \$4,999)

William and Sandi Bruns  
Michael L. and Nancy J. Getty  
Amy Haddad and Steve Martin  
Cecilia Poon\* and Georg Getty  
Diane Watson\*  
Eric Yarwood and Aaron Persen

### CONEFLOWER (\$1,000 - \$2,499)

Mogens and Cindy Bay  
Mark and Brenda Ehrhart  
Catherine and Terry Ferguson

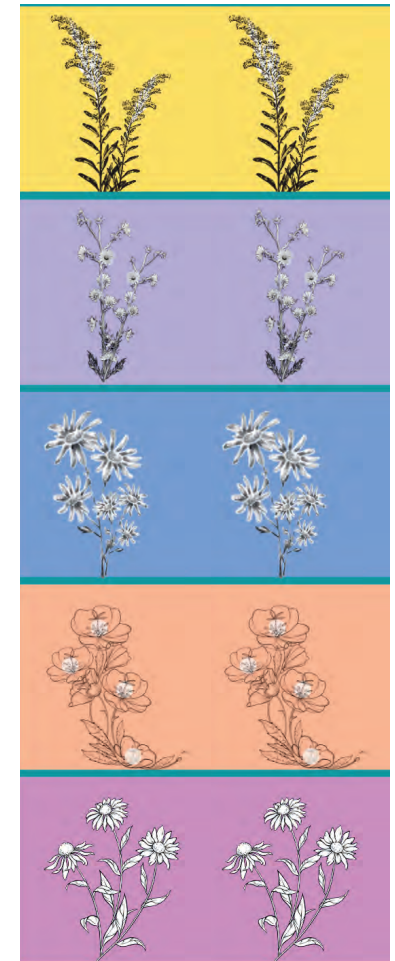
### MILKWEED (\$1 - \$999)

Anonymous (multiple)  
Michael and Deidre Austin  
Marti Baumert  
Alex Beil  
Robert and Denise Bennett  
Eliza Bent  
Stuart Boyce  
Jill Brown  
Lindsey Brown  
Adelle Burk  
Katie Cameron  
Kyle Cartwright  
BC Clark  
Susan Clement  
Michael and Mary Combs  
Mary Kay Conley

Robert Culver and Debra Reilly-Culver  
Makayla Danner  
Amber DeAnn  
Molly Delaney  
Kim Estes  
Christine Fiore  
Chris Foster  
Terry and Mollie Foster  
Krista Freimuth  
Bill Gaus  
Dan and Sarah Gilbert  
Wendy and David Goldberg  
Emma Goldman-Sherman  
Donald and Andi Goldstein  
José González  
Christian and Sonia Gray  
Ellen Hargus  
Angela Heim  
Diane K Hendricks  
Kevin and Felicia Hilton  
Julia Hinson  
Shari Hofschire  
Jim and Kay Horwath  
Anne Hubbard  
Kristine Hull  
Lynn Katherine Jeffries  
Carol and David Johnson  
Julie Kalkowski  
Don Keelan-White  
Richard Kitchen  
Cynthia Kohll  
John and Sarah Kotchian  
Ashley Kuhn

Heike Langdon  
Sarah Lash  
Marissa Lewis  
Loren Lieberthal  
Daria Marinelli  
Michael and Karen Markey  
Joan McBride  
Sara McClure  
Jo Ann C McDowell  
Josei Metal-Corbin and David E. Corbin  
Anne Meysenburg and David Shreffler  
Cary Mohiudden  
Megan Moslander  
Fred and Rosemary Ohles  
Dennis and Jessica Pate  
Allana Pommier  
Denise Powell  
Nancy Pridal  
Erik Quam  
Amanda Randall  
Rhoda Reeling  
Leslie Regan  
Kristen Rinaker  
Marina Rosado\*  
John Rosman  
Karl and Vyree Russell  
Larissa Schultz  
Allen and Dulce Sherman  
Baylee Shlichtman  
Susanne Shore  
Zoella Sneed  
Ellen Struve  
Melissa Teply

Mitch Towne  
Yesenia Valenzuela  
Marcus and Ayla Vargas  
Nina Washington\*  
Ann Watson-Johnson  
Lisa Whalen  
Tiffany White-Welchen  
Sophia Winfrey  
Rachel Wise



## COMMONS MEMBERS

GPTC's Membership Circle for donors who commit to a recurring monthly donation.

Tom Becka	Steve and Deborah Krambeck
William and Sandi Bruns	Katie Kresha
Katie Cameron	Ted and Amy Lane
Sarah Cho	Emiliano Lerda
Diane Coffin*	Jim McKain
Susie Baer Collins and Dennis Collins	Carrie Nath
Timothy and Rachel Combs	Adrian S. Petrescu
Raydell Cordell III*	Madeline Radcliff
Tim Daugherty	Don Risavi
Mary Beth Easley and Mark Bruckner	Carol and Rick Russell
Kelly Gibler	Zoella Sneed
Alec and Laura Gorynski	Ellen Struve
Brendan Hagberg	Kathy Tyree*
Peggy Jones	Whitney Van Arsdall
Nevada Jones	Dan Wach
Reo Jones	Jessalyn Waldron
Mary Kelly and Al Marcault	Nina Washington*
Stephanie Kidd	Diane Watson*
Steven Knox	Ronald J. Zank*

## IN-KIND SUPPORT

Benson Theatre  
Creighton University Theatre Program  
Gifford Park Neighborhood Association  
Metropolitan Community College  
Shelterbelt Theatre  
The Union for Contemporary Art  
Yates Illuminates





Todd and Betiana Simon



Annette and Paul Smith





**In times like these,  
this is what  
Flatwater is for.**

When paywalls divide who sees news,  
Flatwater is for keeping it free for everyone.

When the comments replace real-life dialogue,  
Flatwater is for meeting in person at free events.

When the state feels divided, Flatwater is for  
celebrating what binds us together.

SUPPORT OUR WORK

[flatwaterfreepress.org](http://flatwaterfreepress.org)

**UNO Blackbox & 006**

**Shelterbelt Theatre**

**Blackstone Theatre**



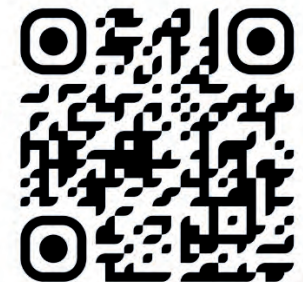
**August 6th-9th**

**Tickets on sale July 1st**

Volunteer Opportunities:

[elohman@omahafringe.org](mailto:elohman@omahafringe.org)

[omahafringe.org](http://omahafringe.org)



GPTC'S 2026  
HOTEL PARTNER



The New Works Development for Disabled Artists (NWD(2)A) program is a partnership between Common Senses and Great Plains Theatre Commons. This program is designed to support Omaha-Metro and surrounding artists who identify as having a disability in the next step of developing a new theatrical work in progress.

NWD(2)A artists are provided a stipend, coaching sessions with artists, space to workshop and rehearse, and supplies. The experience is formatted to be fully accessible, beginning with the GPTC New Play Festival and ending with a showcase at the Common Senses Festival. It is a celebration of artistic expression that supports unique visionaries and their stories, which make our community, and the world, stronger.

# ***SUPPORT GPTC***

...with a one-time gift – no amount is too small and every donation makes a difference!

OR

...by becoming a Commons Member with a monthly recurring donation – make gift \$10 or more each month and we'll send you a stylish GPTC hat or a shockingly sturdy GPTC tote bag – your choice!

To learn about other ways to support GPTC, such as becoming a Pathfinder Partner or a production sponsor, please contact Rachel Hauben Combs at [rhaubencombs@gptcplays.com](mailto:rhaubencombs@gptcplays.com) or visit us online at <https://www.gptcplays.com/support/>





All efforts have been made to ensure the accuracy and inclusion of GPTC New Play Festival participant names and festival information. We regret any errors or omissions. Activities at the GPTC New Play Festival are public events. Festival activities may be photographed, videotaped or audio taped for the purpose of publicity, marketing, advertising or other official Great Plains Theatre Commons purposes.

# THANK YOU FOR JOINING US

What a joy it is to welcome old friends and new to the 21st Annual New Play Festival.

For over two decades, GPTC has sustained a foundational commitment to support the creation of new stories while removing barriers that stand between our community and our beloved art form.

We believe that the stories we tell one another help to build the future we share. And if we want that future to be one in which all voices are welcome and equally respected, we need to make sure that all perspectives receive the same level of support and care. That is what we strive to do through all our programs and performances.

**And we simply cannot do it without you.**

As we continue to nurture and share diverse new stories, we ask for your help. Our most important partners are the people who make our work possible. People like you.

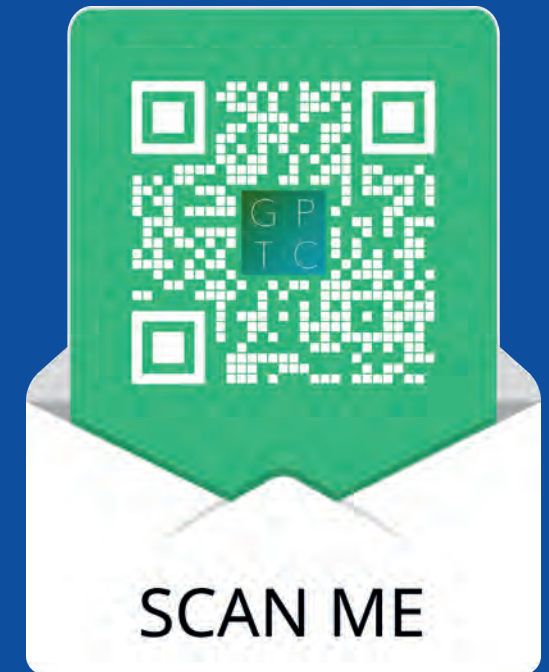
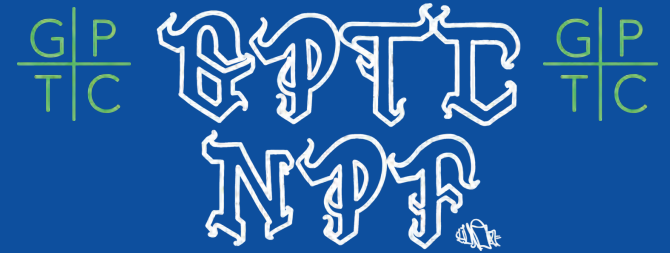
Please make sure that the work of GPTC continues to thrive. Whether it's a one-time gift or a recurring monthly donation, every single contribution helps us to remain a vibrant resource for artists and a dynamic conduit for healing community connections.

We can't wait to see what comes next. Join the story and help us write the next chapter.

With appreciation and gratitude,



Rachel Hauben Combs  
GPTC Development Director



Great Plains Theatre Commons  
c/o Yates Illuminates, 3260 Davenport Street  
Omaha, NE 68131  
commons@gptcplays.com | www.gptcplays.com